

# GREENTOUR

## TRUCK & BUS RADIAL TIRE CATALOGUE



**GREENTOUR**

18PR FLEK: 100AD STEEL 2  
MAX LOAD SINGLE 2000 kg (1100 lbs) AT 300 kPa (150 PSI) COLD  
MAX LOAD DUAL 2000 kg (1100 lbs) AT 300 kPa (150 PSI) COLD U.S.J

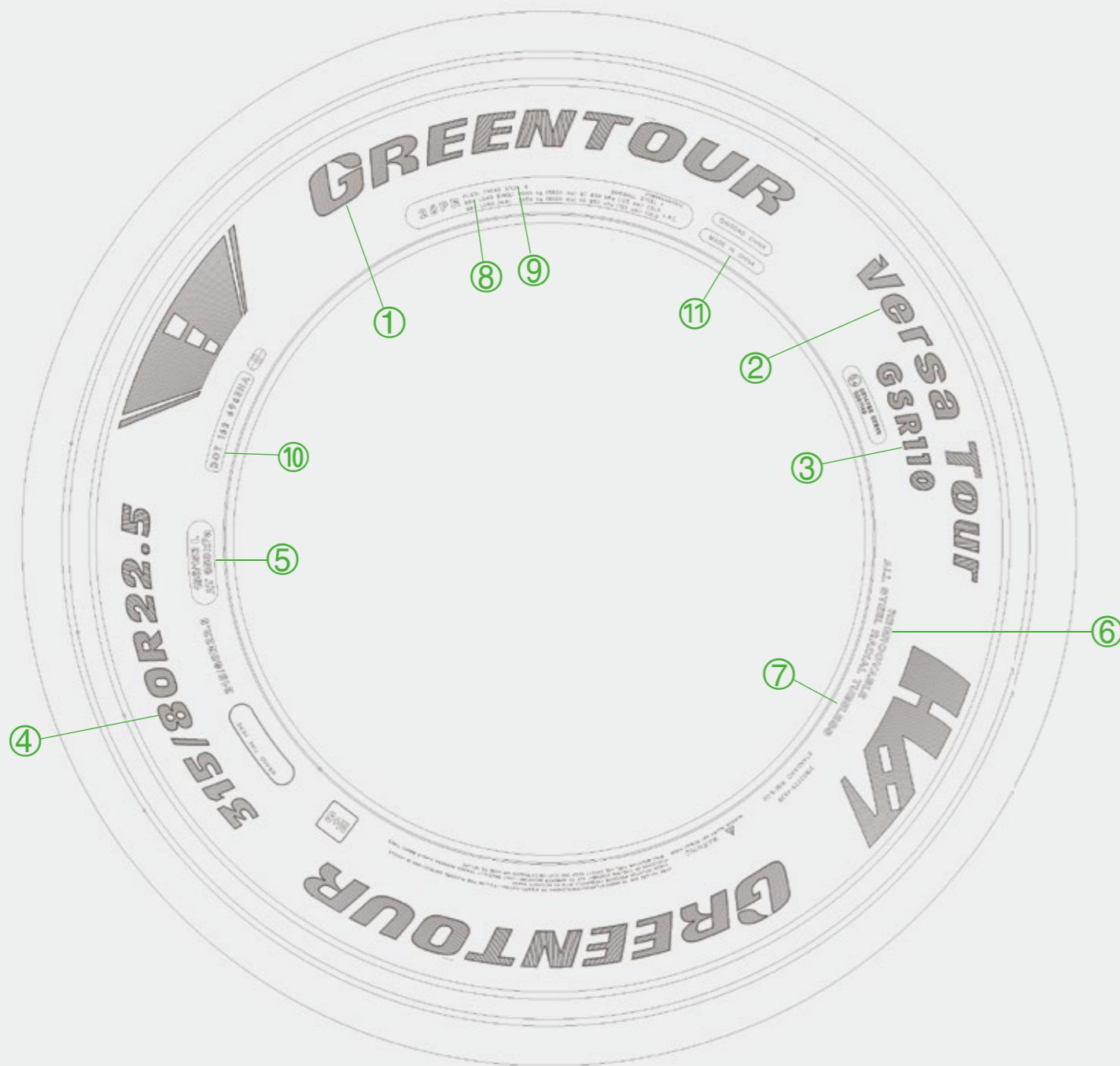
MADE IN VIETNAM

# TIRE SOLUTIONS FOR TRANSPORTATION

GREENTOUR is a leading tire solution provider. Our expert team tackles challenges such as increased traffic, heavy loads, and uncertain road conditions. With a focus on minimizing operational costs, our products ensure continuous vehicle operation. As trusted partners in the face of evolving international regulations, GREENTOUR tires guarantee reliability for every journey.



# Sidewall Markings



① **GREENTOUR brand**

② **VersaTour series**

③ **Pattern name**

④ **Size designation**

315 = tire nominal section width in mm

80 = nominal aspect ratio (nominal height to nominal width = 80%)

R = radial construction

22.5 = nominal rim diameter in inch

⑤ **Service description**

Consisting of

156 = load index for single fitment

153 = load index for dual fitment

L = speed symbol

⑥ **Regroovable**

The manufacturer has designed the tire for regrooving

⑦ **Tube type**

⑧ **Load designation**

For single/dual fitment and indication of max. inflation pressure in psi (1 bar = 14.5 psi)

⑨ Data as per safety standards on inner construction or number of plies, in this case,  
**Tread:** under the tread, there are several steel cord plies (including casing)  
**Sidewall:** viewed from the side there is one steel cord ply (in this case the casing ply)

⑩ **DOT**

= U.S. Department of Transportation (responsible for tire safety standards)  
 Tire complies with requirements set out in US Reg. FMVSS 119

⑪ **Country of origin**

# Tire Range








## RouteTour

The RouteTour Series tires are engineered for long-distance travel and are characterized by maintaining a steady speed with minimal need for braking or accelerating. The journey takes place on a well-maintained road surface with fewer curves, allowing for a smoother and more consistent driving experience.

Steer	<b>GSL910</b>  P.09	<b>GSL920</b>  P.11	<b>GSL921</b>  P.13		
Drive	<b>GDL810</b>  P.15	<b>GDL812</b>  P.17	<b>GDL821</b>  P.19		
Trailer	<b>GSL910</b>  P.09	<b>GSL920</b>  P.11	<b>GSL921</b>  P.13	<b>GTL310</b>  P.21	<b>GTL320</b>  P.23

## VersaTour

The VersaTour Series tires are designed for extended trips that involve frequent stops, speed fluctuations, and directional changes. The roads are well-paved but include curves and occasionally rough surfaces, offering a combination of manageable and challenging driving conditions.

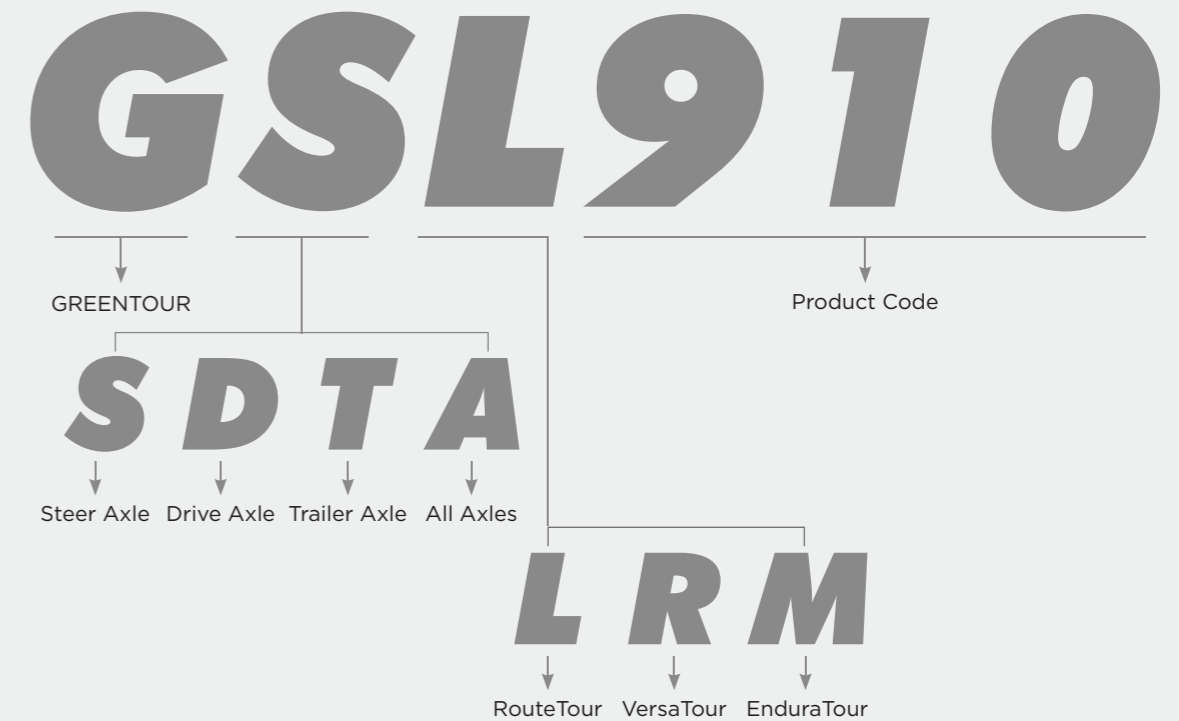
Steer	<b>GSR110</b>  P.27		
Drive	<b>GDR210</b> <b>GDR210+</b>  P.31	<b>GDR220</b>  P.33	
Trailer	<b>GSR110</b>  P.27	<b>GTR311</b> <b>GTR311N</b>  P.35	<b>GTR321</b>  P.37
All Position	<b>GAR111</b>  P.29		

## EnduraTour

The EnduraTour Series tires are built for both on-road and off-road performance, excelling in aggressive, uneven, and muddy terrains, and are ideal for carrying heavy loads at medium to slow speeds with frequent stops, offering exceptional durability and adaptability to diverse road conditions.

Drive	<b>GDM610</b>  P.45	<b>GDM612</b>  P.47	<b>GDM613</b>  P.49	<b>GDX711</b>  P.51
All Position	<b>GAM510</b> <b>GAM510+</b>  P.41	<b>GAM512</b> <b>GAM512HD</b>  P.43		

# Tire Naming System



# The RouteTour Series

The RouteTour Series tires are engineered for long-distance travel and are characterized by maintaining a steady speed with minimal need for braking or accelerating. The journey takes place on a well-maintained road surface with fewer curves, allowing for a smoother and more consistent driving experience.



**RouteTour**  
**GSL910**  
**GSL910N**

**RouteTour**  
**GSL920**

**RouteTour**  
**GSL921**

**RouteTour**  
**GDL810**



**RouteTour**  
**GDL812**

**RouteTour**  
**GDL821**

**RouteTour**  
**GTL310**

**RouteTour**  
**GTL320**

# RouteTour

## GSL910/GSL910N

Premium Steer Tire For Long Haul Application

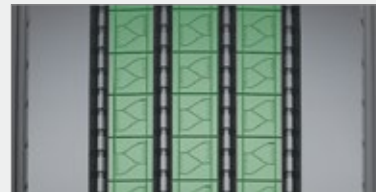


**GSL910:** A steer-axle tire focused on extended mileage and long, even wear, helping fleets reduce cost per kilometer.

**GSL910N:** A steer-axle tire built for long mileage and adaptable performance across varying roads and weather conditions.

### A Enhanced Steering Response

The optimized tread pattern, combined with the continuous center rib, provides precise steering feedback, ensuring quick and accurate responses to driver inputs, especially critical during lane changes and tight maneuvers.

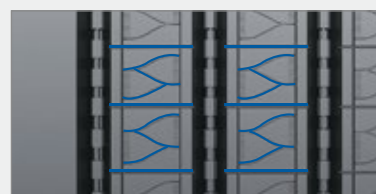


### B Enhanced High-Speed Stability

The robust sidewall construction and optimized tread stiffness work together to maintain tire shape and contact patch integrity at high speeds, ensuring that the vehicle remains stable and predictable during long highway drives.

### C Superior Wet Braking

The advanced tread pattern of the GSL910 is engineered to shorten stopping distances on wet surfaces, improving safety and providing peace of mind in adverse weather conditions.



GSL910



GSL910N

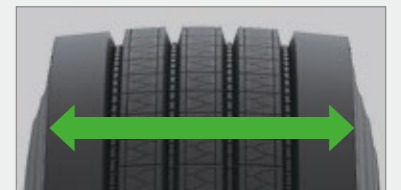
### D Advanced Rubber Compound

The tire features an advanced rubber compound that enhances tread wear resistance, extending the life of the tire and reducing the need for frequent replacements.



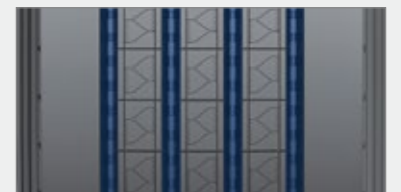
### E Wide Tread Footprint

A wide tread footprint promotes uniform tread wear, maximizing mileage and ensuring consistent performance throughout the tire's service life.



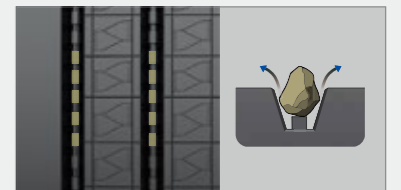
### F Optimized Groove Geometry

The tire's grooves are designed to be self-cleaning, ensuring that mud, snow, and other debris are quickly ejected, maintaining consistent performance and extending mileage in various conditions.



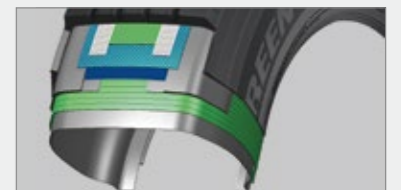
### G Stone Ejectors

Stone ejectors embedded in the tread help prevent debris from lodging in the tire, reducing wear and extending the overall life of the tire.



### H Robust Casing Construction

The GSL910 is built with a robust casing construction that withstands heavy loads and impact damage, making it a reliable choice for long-haul operations.



Inch	Size	PR	LI/SS	TD (mm)	Plant
22.5	315/70R22.5 <sup>GSL910N</sup>	18PR	156/150L(152/148M)	15.5	VN
	315/80R22.5 <sup>GSL910N</sup>	20PR	156/153L	16.5	VN
	315/80R22.5 <sup>GSL910</sup>	20PR	156/153L	16.5	CN VN

# RouteTour **GSL920**

Premium Steer Tire For Long Haul Application



A steer-axle tire that combines strong safety reserves with fuel-efficient, long-mileage performance.

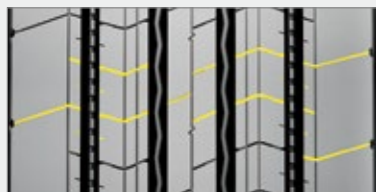
## A Four Main Groove Design

The classic four-groove pattern is specifically designed for long-distance driving, providing excellent handling for straight-line stability. Its superior water drainage capabilities reduce the risk of hydroplaning during rainy conditions.



## B Continuous Central Rib

Improves straight-line stability and directional control, making it ideal for long-distance highway driving.



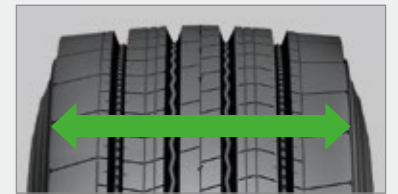
## C Superior Tread Design

The crown is reinforced with multiple sipes, enhancing the tire's resistance to wet conditions and improving safety during driving in rain and snow.



## D Wide Tread Design

The wide contact patch increases the tire's ground contact area, disperses load pressure, improves wear resistance, and is ideal for heavy-duty long-haul transportation.



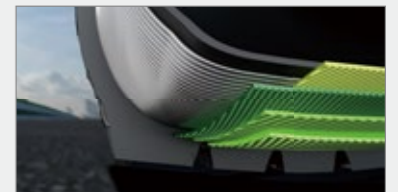
## E Enhanced Lateral Stability

Reinforced carcass structure and specially strengthened shoulders improve lateral stability during high-speed cornering.



## F High Retreadability

The casing design allows for multiple retreads, extending the overall tire lifespan and reducing long-term costs.



Inch	Size	PR	LI/SS	TD (mm)	Plant
22.5	275/70R22.5	16PR	148/145M	14.5	VN
	295/80R22.5	18PR	154/149M	15.5	VN
	315/60R22.5	18PR	154/148L	13.0	VN
	315/70R22.5	18PR	156/150L(152/148M)	15.0	VN
	315/80R22.5	18PR	156/150L(154/150M)	16.0	VN
	315/80R22.5	20PR	156/150L(154/150M)	16.0	VN
	385/55R22.5	20PR	160K(158L)	13.5	VN
	385/65R22.5	20PR	160K(158L)	13.5	VN
	385/55R22.5	24PR	164K(158L)	13.5	VN
	385/65R22.5	24PR	164K(158L)	13.5	VN

# RouteTour **GSL921**

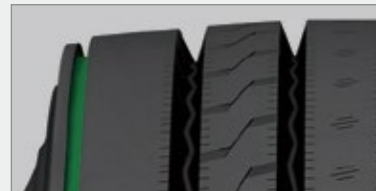
Steer Tire For Long Haul & Regional Application



A steer-axle tire focused on safety, stability, and even wear, delivering confident handling and long mileage.

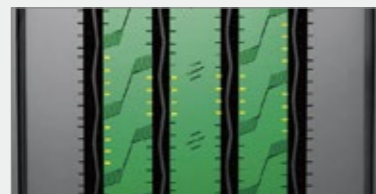
## A Decoupling Grooves

Annular grooves on both shoulders effectively prevent uneven shoulder wear, extending the tire's mileage.



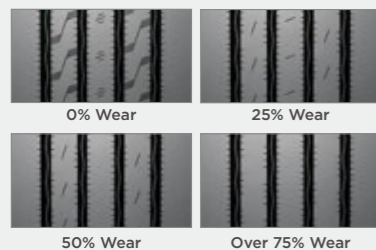
## B Enhanced Wet Traction

Three central circumferential ribs with densely distributed shallow sipes improve grip on wet surfaces, ensuring driving safety.



## C Wear Indicator

Evenly distributed three wear indicators on the central ribs provide a clear visual cue as the tread wears, signaling timely tire replacement to ensure driving safety.



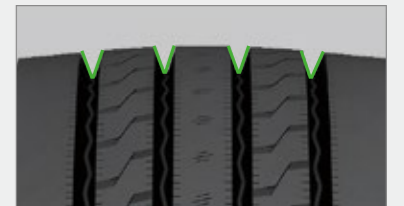
## D Low Rolling Resistance

Smooth shoulder design reduces friction between the tire and the road, improving fuel efficiency and lowering operational costs.



## E Excellent Self-Cleaning Performance

The four main grooves feature an S-shaped design with V-shaped inclined walls, allowing trapped stones and mud to be expelled during high-speed rotation, providing effective self-cleaning.



## F Strong Retreadability

The distribution of shoulder materials is optimized to reduce heat buildup, preventing abnormal shoulder wear.

## G Optimized Shoulder Formula

Smooth shoulder design reduces friction between the tire and the road, improving fuel efficiency and lowering operational costs.



## H Even Tread Pressure Distribution

The optimized tread design ensures uniform ground contact pressure, resulting in a smooth wear surface and increased mileage.



Inch	Size	PR	LI/SS	TD (mm)	Plant
22.5	11R22.5	16PR	146/143M	14.0	VN
	295/75R22.5	16PR	146/143M	14.0	VN
24.5	11R24.5	16PR	149/146M	14.0	VN

# RouteTour GDL810

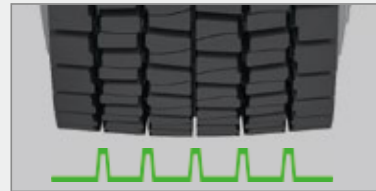
Premium Drive Tire For Long Haul & Regional Application



A drive-axle tire delivering strong traction and dependable mileage on mixed road conditions.

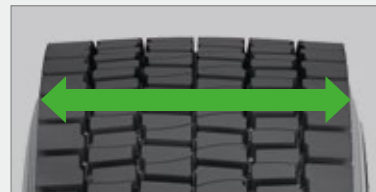
## A Deep Lug Tread Blocks

The tire features a deep tread pattern that provides exceptional traction in long-haul and regional. This design ensures the vehicle maintains grip in challenging conditions, enhancing overall safety.



## B Wide Contact Area

A wide contact area maximizes road grip, enhancing control and stability during long drives. This feature is especially beneficial when navigating through tight turns or when the vehicle is heavily loaded.



## C Open Shoulder Design

The open shoulder design of the GDL810 ensures effective water evacuation, reducing the risk of hydroplaning and maintaining strong traction on wet surfaces.



## D Tread Compound with Silica

The GDL810 is constructed with a silica-infused tread compound that enhances wear resistance, providing longer tire life and more consistent performance over time.

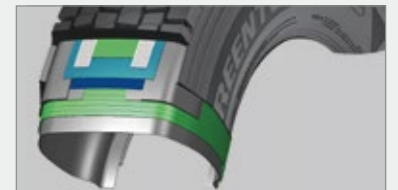


## E Tie-Bar Reinforcement

Tie-bar reinforcement stabilizes the tread blocks, preventing irregular wear and promoting even tread wear, which extends the tire's mileage.

## F High-Strength Steel Belts

The GDL810 is equipped with high-strength steel belts that offer superior protection against punctures and cuts, which is crucial for maintaining tire integrity over long distances.



## G Reinforced Carcass Construction

Reinforced carcass construction maintains structural integrity under heavy loads, ensuring that the tire can withstand the rigors of long-haul transportation.

## H Enhanced Bead Construction

The tire features enhanced bead construction that improves fitment on the rim, reducing slippage and ensuring that the tire remains securely in place during operation.



Inch	Size	PR	LI/SS	TD (mm)	Plant
22.5	295/80R22.5	18PR	152/149M	20.0	CN
	315/70R22.5	18PR	154/150L	20.0	CN VN
	315/80R22.5	20PR	156/153K	24.0	CN VN

# RouteTour GDL812

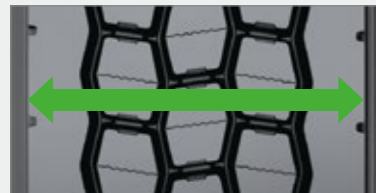
Drive Tire For Long Haul & Regional Application



A closed-shoulder drive tire engineered for ultra-high mileage and stable tread wear in highway service.

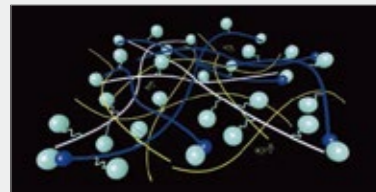
## A Wide-Tread Design

The GDL812 features a 9.5-inch wide-tread, providing enhanced stability and improved traction on various road conditions. This design maximizes contact with the road making it suitable for long-haul and regional applications.



## B Optimized Tread Compound

The tire is formulated with an advanced tread compound that maintains performance over extended periods while reducing rolling resistance. This balance improves fuel efficiency, allowing fleets to achieve better mileage with lower fuel costs.



## C Hexagonal Tread Pattern

The unique hexagonal tread pattern enhances stability by providing a larger contact area with the road. This design improves control, especially during high-speed driving, and reduces the risk of slippage.



## D Closed Shoulder Design

The closed shoulder design of the GDL812 maintains consistent performance and reduces irregular wear, especially during long highway drives. This feature ensures that the tire delivers reliable stability throughout its service life.

## E Robust Casing Structure Construction

The GDL812 is designed with a robust casing structure that withstands the rigors of long-haul applications, offering protection against impact damage and punctures. This durability ensures that the tire can handle the demands of extensive highway use.



## F Heat Dissipation Design Structure Construction

The GDL812 is engineered with a heat dissipation design that reduces the risk of blowouts or other heat-related failures. This feature is crucial for maintaining tire integrity during long hauls, particularly in hot climates.



## G Enhanced Sidewall Protection

The tire features reinforced sidewalls that offer extra protection against abrasions and curb damage, extending the tire's life and improving reliability in challenging road conditions.



Inch	Size	PR	LI/SS	TD (mm)	Plant
22.5	11R22.5	16PR	146/143L	22.5	CN VN
	11R22.5	18PR	149/146L	22.5	CN
	295/75R22.5	16PR	146/143L	22.5	VN
24.5	11R24.5	16PR	149/146L	22.5	VN

# RouteTour GDL821

Drive Tire For Long Haul Application



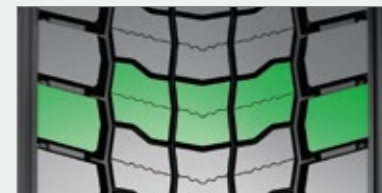
A drive-axle tire that lowers fuel consumption while providing durable, high-mileage performance.

## A Unique Unidirectional Design

The tread pattern is designed for single-directional flow, providing optimal traction and drainage performance, ensuring good grip on both dry and wet surfaces.

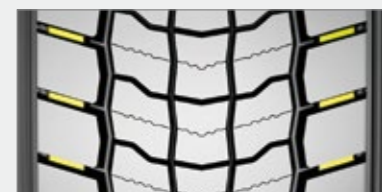
## B Unique Tread Block Design

Five large tread blocks are arranged laterally, with shoulder and central blocks staggered. This alternating ground contact reduces tire vibration during driving, enhancing ride stability.



## C Reinforced Shoulder Design

Independent tread patterns on both shoulders are connected by strengthening ribs, ensuring tire drive force while preventing tread tearing due to excessive deformation during heavy acceleration, thus enhancing tire lifespan.



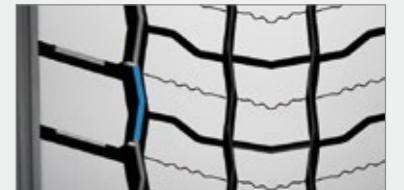
## D Wear-Resistant Compound

Unyielding wear-resistant compound that reduces wear during prolonged high-speed driving, extending tire lifespan and providing excellent mileage performance.



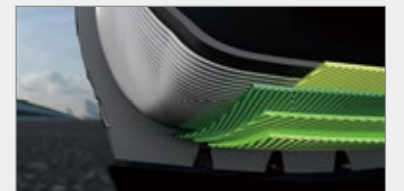
## E Self-Cleaning Capability

The "V" shaped tread grooves automatically expel stones, mud, and other debris during driving, keeping the tread surface clean.



## F Reinforced Casing Structure

Built with UHT steel cords for a robust structure, the tire ensures enhanced durability and damage resistance while supporting multiple retreads, effectively reducing replacement costs and enhancing performance during prolonged high-speed driving.



## G Wide Contact Area

The wide tread design increases the tire's ground contact area, distributes load pressure evenly, reduces tire wear, and enhances mileage.

Inch	Size	PR	LI/SS	TD (mm)	Plant
	295/60R22.5	18PR	150/147L	15.5	VN
	315/60R22.5	18PR	152/148L	16.5	VN
22.5	315/70R22.5	18PR	156/150L(152/148M)	18.0	VN
	315/80R22.5	18PR	156/150L(154/150M)	17.5	VN
	315/80R22.5	20PR	156/150L(154/150M)	17.5	VN

# RouteTour GTL310

Premium Trailer Tire For Long Haul & Regional Application



A wide-base trailer tire designed to maximize carrying efficiency with ultra-high mileage performance.

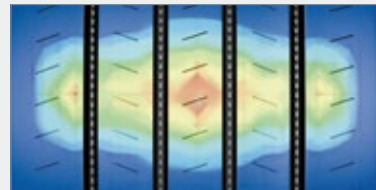
## A Enhanced Shoulder Design

The GTL310 features an enhanced shoulder design that reduces uneven wear in high-scrub applications, extending tire life and ensuring more consistent performance over time.



## B Optimized Footprint Distribution

The tire's design ensures optimal footprint distribution, promoting even wear across the tread and extending tire life. This design reduces the frequency of replacements, making it a cost-effective option for fleet operators.



## C High-Wear Tread Compound

Constructed with a high-wear tread compound, the GTL310 resists abrasion and provides more miles per tire, offering excellent value over its lifespan.



## D Advanced Tread Design

The GTL310 incorporates an advanced tread design that minimizes energy loss, improving fuel efficiency and lowering operating costs over long distances.



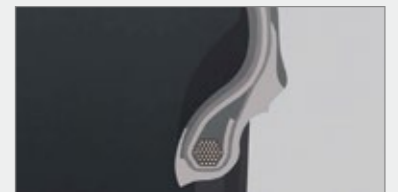
## E Optimized Tread Depth

The tire features an optimized tread depth that balances rolling resistance and traction, enhancing fuel efficiency without compromising performance.



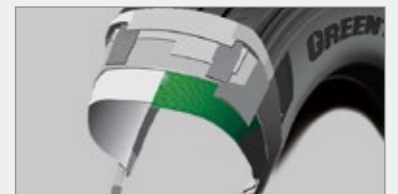
## F Sturdy Bead Design

The GTL310's sturdy bead design ensures a secure fit on the rim, enhancing stability during heavy-duty operations. This feature is particularly important for maintaining control and safety in trailer applications.



## G Reinforced Carcass Structure

The GTL310's reinforced carcass structure increases load-bearing capacity and reduces deformation under stress, maintaining tire performance and reliability during demanding long-haul operations.



Inch	Size	PR	LI/SS	TD (mm)	Plant
19.5	435/50R19.5	20PR	160J	12.5	VN
	445/45R19.5	20PR	160J	13.0	VN
22.5	385/55R22.5	24PR	164K	15.5	VN
	385/65R22.5	24PR	164K	15.5	CN VN

# RouteTour **GTL320**

Trailer Tire For Long Haul & Regional Application



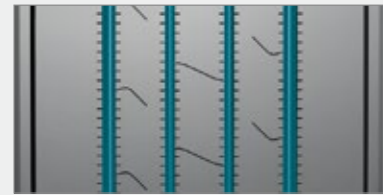
A shallow-tread trailer tire engineered for fuel savings while delivering reliable, long-lasting mileage for fleets.

## A Reinforced Bead Design

The enhanced bead design reduces the risk of damage caused by high torque during casing deformation when the vehicle frequently turns or changes lanes, improving tire stability.

## B Straight Groove Design

Featuring four straight grooves that improve water evacuation, reduce the risk of lateral skidding, and enhance lateral stability, boosting wet surface performance.



## C Central Rib Stability

The central rib design provides excellent straight-line stability, making it particularly suitable for long-haul trailers on highways.

## D Retreadable

UHT steel cords create a more durable casing structure, suitable for multiple retreads, reducing tire replacement costs for long-haul trailers.



## E Low Rolling Resistance

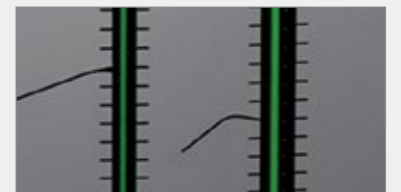
Smooth sides with a closed-shoulder design reduce the tire's rolling resistance, improving fuel efficiency and lowering transportation costs.

## F Low Void Ratio Tread Design

The high saturation tread design increases the contact area of the tire crown, evenly dispersing ground pressure and enhancing tire mileage.

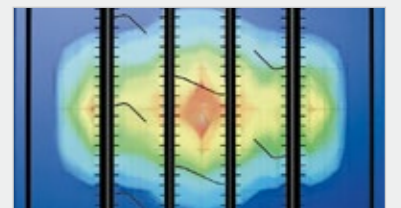
## G Self-Cleaning Grooves

"V" design, allowing embedded stones and debris to be ejected during high-speed rotation, protecting the tire crown from damage.



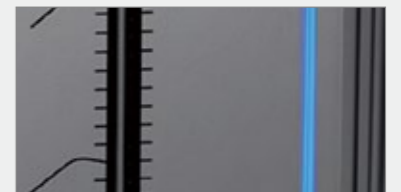
## H Balanced Wear Design

The crown structure is adjusted to optimize the contact footprint, distributing tread pressure evenly. This ensures more uniform wear on the crown, reduces the need for replacements due to uneven wear, and extends the tire's lifespan.



## I Shoulder Anti-Irregular Wear Grooves

The circumferential buffer groove design on both shoulders effectively cushions vehicle pressure during ground contact, reducing the occurrence of irregular wear.



Inch	Size	PR	LI/SS	TD (mm)	Plant
22.5	11R22.5	14PR	144/142M	9.5	VN
	295/75R22.5	14PR	144/141M	9.0	VN

# The VersaTour Series

The VersaTour Series tires are designed for extended trips that involve frequent stops, speed fluctuations, and directional changes. The roads are well-paved but include curves and occasionally rough surfaces, offering a combination of manageable and challenging driving conditions.



**VersaTour**  
**GSR110**

**VersaTour**  
**GAR111**

**VersaTour**  
**GDR210**  
**GDR210+**

**VersaTour**  
**GDR220**

**VersaTour**  
**GTR311**  
**GTR311N**

**VersaTour**  
**GTR321**

# VersaTour GSR110

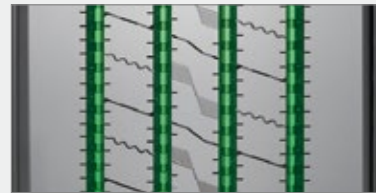
Steer/Trailer Tire For Regional Application



An all-position steer/trailer tire that offers a solid balance of regional and super-regional road adaptability with dependable mileage.

## A Optimized Main Groove Design

Reduces lateral tire sliding during driving, enhancing handling performance in complex road conditions, and features stone ejection design to prevent debris from getting lodged, minimizing tread damage.



## B Multi-Sipes Design

Enhances tread grip, ensuring controllability and traction on wet and snowy surfaces.



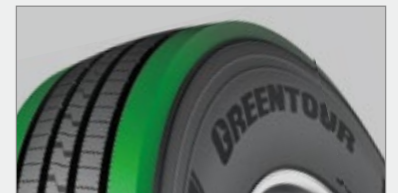
## C High Heat Resistance

Utilizing a special rubber compound, the tire offers excellent heat resistance during prolonged driving, reducing the risk of overheating and ensuring safety.



## D Enhanced Shoulder Design

Optimized shoulder design reduces irregular wear, improving wear resistance and handling stability.



## F Robust And Durable

Featuring a reinforced casing structure that enhances impact resistance and puncture protection, adapting to various road conditions and providing a longer lifespan.



Inch	Size	PR	LI/SS	TD (mm)	Plant
	9.5R17.5	18PR	143/141K	13.5	CN
	205/75R17.5	14PR	124/122M	13.0	VN
	215/75R17.5	16PR	135/133L	12.5	CN
	215/75R17.5	16PR	135/133L(128/126M)	12.5	VN
	235/75R17.5	18PR	143/141L	13.0	CN
	235/75R17.5	18PR	143/141L(132/130M)	13.0	VN
	245/70R17.5	18PR	143/141K	13.0	VN
	225/70R19.5	14PR	128/126L	12.5	VN
19.5	245/70R19.5	18PR	144/142J(136/134M)	13.0	VN
	265/70R19.5	18PR	143/141J(140/138M)	13.5	VN
	285/70R19.5	18PR	150/148K(146/144M)	13.0	VN
	11R22.5	16PR	146/143M	15.5	VN
	11R22.5	16PR	148/145M	15.5	CN VN
	11R22.5	18PR	149/146L	15.5	CN
	12R22.5	18PR	152/149L	15.0	CN
22.5	255/70R22.5	16PR	140/137M	13.5	VN
	275/70R22.5	16PR	148/145M	14.5	CN
	275/80R22.5	16PR	149/146L	14.5	VN
	295/75R22.5	14PR	144/141L	15.5	VN
	295/75R22.5	16PR	146/143L	15.5	VN
	295/80R22.5	18PR	154/149L	15.5	CN
	315/80R22.5	20PR	156/153L	15.5	CN
24.5	11R24.5	16PR	149/146M	15.5	VN

# VersaTour GAR111

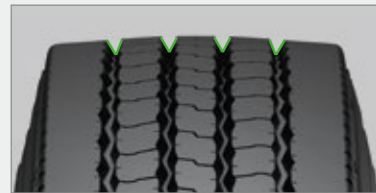
All-Position Tire For Regional Application



A light-truck all-position tire delivering well-balanced overall performance in traction, handling, and mileage.

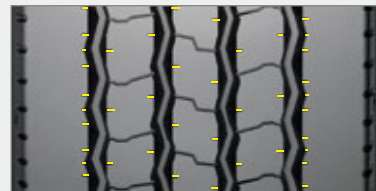
## A Excellent Self-Cleaning Grooves

The tread features a "V" design that ejects stones trapped in the grooves during high-speed driving, effectively reducing stone damage.



## B Anti-Slip Design

Four tread grooves are lined with densely arranged micro steel sipes, enhancing the tire's anti-slip performance and reducing the risk of skidding.



## C Excellent Adaptability

Suitable for various driving environments, providing outstanding performance whether on highways or intercity roads.



## D Dense Siping Design

The crown features densely arranged shoulder grooves, maintaining both excellent heat dissipation and driving performance.



## E Optimized Tread Design

The crown features densely arranged shoulder grooves, maintaining both excellent heat dissipation and driving performance.



## F Shock Absorption Design

The three central ribs encircle the crown with tread blocks arranged in a staggered pattern, alternating contact with the road surface during travel. This design reduces vibration, providing a smoother ride while the tire is in motion.

## G Retreadable

The robust and resilient steel belt construction enhances the tire's retreadability, allowing for multiple retread cycles.

Inch	Size	PR	LI/SS	TD (mm)	Plant
16	7.50R16LT	14PR	123/119L	12.5	CN

# VersaTour

## GDR210 / GDR210+

Drive Tire For Regional Application



**GDR210:** A regional drive tire engineered to balance traction, driving stability, and long mileage in everyday fleet service.

**GDR210+:** A regional drive tire with a widened tread that balances traction, driving stability, and high mileage to help lower cost per kilometer.

### A Stone Ejection Design

The tread blocks are optimized with angled designs and a unidirectional pattern, enabling the expulsion of trapped stones and providing excellent self-cleaning capabilities.



### B Reinforced Tread Blocks

The central crown features independent hexagonal tread blocks complemented by lateral grooves, enhancing exceptional grip, especially on wet and muddy surfaces.

### C Tear-Resistant Tread Design

The specially formulated tread enhances tear resistance, extending the tire's lifespan under harsh conditions.



### D Reinforced Strengthened

The bead design is reinforced to ensure a tight fit between the tire and the rim during vehicle power output, enhancing driving safety.



### E Reinforced Block Connectors

The tread blocks are interconnected with reinforcing ribs, reducing the flexing of individual blocks under load and minimizing feathering wear.

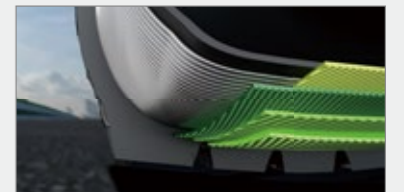


### F Effective Heat Dissipation Design

Grooves between the tread blocks aid in rapid heat dissipation, ensuring the crown maintains durability during prolonged driving.

### G Retreadability

This tire is designed with retread potential in mind, featuring a sturdy and durable construction suitable for multiple retreads, thereby extending its lifespan.



Inch	Size	PR	LI/SS	TD (mm)	Plant
22.5	11R22.5 GDR210	16PR	148/145L	20.0	CN
	11R22.5 GDR210	18PR	149/146L	20.0	CN
	275/80R22.5 GDR210	16PR	149/146L	20.0	VN
	315/80R22.5 GDR210	20PR	156/153K	20.0	CN
	295/80R22.5 GDR210+	18PR	152/149L	21.0	VN
	315/70R22.5 GDR210+	18PR	156/150L(152/148M)	19.5	VN
	315/80R22.5 GDR210+	18PR	156/150L(154/150M)	20.5	VN
	315/80R22.5 GDR210+	20PR	156/150L(154/150M)	20.5	VN

# VersaTour GDR220

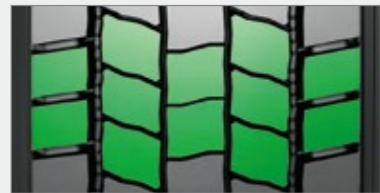
Drive Tire For Regional Application



A light-truck drive tire combining strong traction, low failure risk, and reliable mileage to keep vehicles running smoothly.

## A Lateral Five-Block Tread Design

The tread features five lateral blocks, increasing contact area while balancing wear resistance and grip performance.

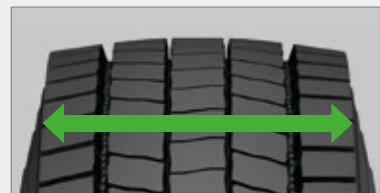


## B Central Tread Arrangement

The three central tread blocks are closely connected and staggered, ensuring high-speed performance while reducing driving vibrations.

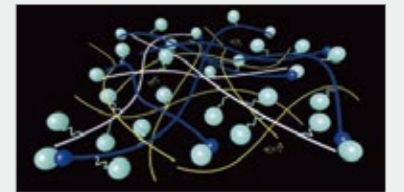
## C Widened Crown Design

The widened crown design provides a larger contact area, enhancing driving stability and grip.



## D Anti-Aging Compound

The formula incorporates enhanced rubber molecular chains to effectively slow down tire aging, extending its lifespan.



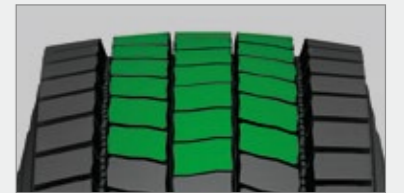
## E Classic Square Design

Ensures even distribution of tread pressure across the surface, with shoulder blocks connected by reinforcing ribs to reduce irregular wear.



## F Low Void Ratio for Fuel-Efficient Drive

Compared to similar products, the crown features a high-saturation design in the center, reducing fuel consumption at the drive axle during high-speed driving.



## G Stone Ejection Performance

The grooves on both sides of the crown feature stone-ejecting channels, effectively removing stones and dirt, significantly reducing damage caused by stone entrapment.

Inch	Size	PR	LI/SS	TD (mm)	Plant
17.5	205/75R17.5	14PR	124/122L	14.5	VN
	215/75R17.5	16PR	135/133L(128/126M)	14.5	VN
	235/75R17.5	18PR	143/141L(132/130M)	14.5	VN
19.5	265/70R19.5	18PR	143/141J(140/138M)	15.0	VN
	285/70R19.5	18PR	150/148K(146/144M)	15.5	VN

# VersaTour

## GTR311/GTR311N

Premium Trailer Tire For Regional Application



**GTR311:** A wide-base trailer tire engineered to balance regional road adaptability with long, even mileage for fleet use.

**GTR311N:** A wide-base trailer tire that balances regional road adaptability and high mileage, specially tuned for reliable all-weather performance.

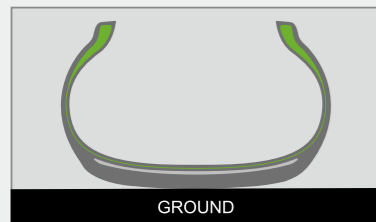
### A Widened Tread

Enhancing wear resistance and providing excellent stability during long-distance driving.



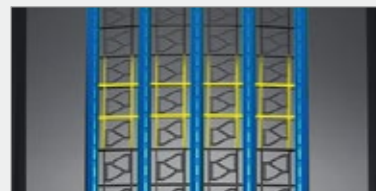
### B Carcass Contour

The newly designed carcass contour effectively reduces shoulder wear, extending the tire's lifespan.



### C Five-Groove Design

The grid-patterned grooves enhance drainage capability while effectively preventing lateral sliding during tire rotation.



### D Excellent Wet Traction

A dense distribution of steel plates across the four central ribs enhances the vehicle's resistance to hydroplaning, improving safety on slippery surfaces.

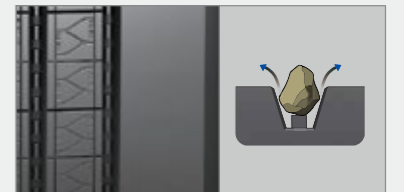


### E Noise Reduction Design

The optimized tread pattern minimizes noise during operation, enhancing driving comfort.

### F Stone Ejector Design

The stone ejector feature at the bottom of the tread grooves reduces the risk of puncture damage from sharp objects in adverse conditions.



### G Low Rolling Resistance

The smooth shoulder design reduces rolling resistance, thereby improving fuel efficiency.

### H Good Heat Dissipation

The optimized shoulder structure lowers heat build-up in the shoulder area, enhancing durability for long-distance driving.

### I Robust Carcass Construction

The carcass structure UHT steel belts, ensuring the product can be retreaded multiple times.

Inch	Size	PR	LI/SS	TD (mm)	Plant
22.5	385/65R22.5 GTR311	24PR	164K	15.5	CN
	385/65R22.5 GTR311N	24PR	164K	15.5	VN

# VersaTour GTR321

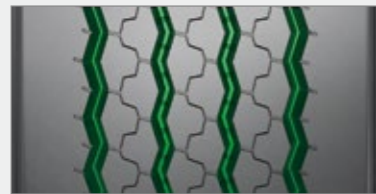
Trailer Tire For Long Haul & Regional Application



A flagship wide-base trailer tire delivering ultra-high mileage and stable performance for demanding operations.

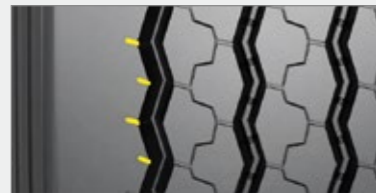
## A Versatile Adaptability

The design features four zigzag grooves that ensure high-speed performance while accommodating regional transport environments, effectively adapting to varying road conditions during transit.



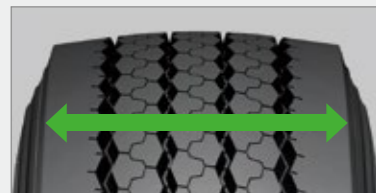
## B Wet Traction Performance

The sipe on the shoulders incorporate steel plates, effectively enhancing resistance to hydroplaning.



## C Wide Tread Design

The wide tread surface maximizes the contact area between the crown and the ground, improving durability and stability.



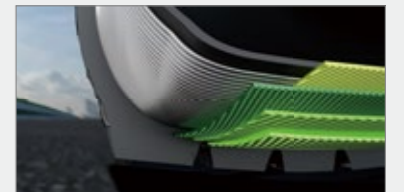
## D Low Rolling Resistance

The smooth surface on both sides, combined with a closed shoulder design, reduces rolling resistance during travel, thereby enhancing fuel efficiency.



## E Robust carcass Structure

The carcass UHT steel wires, ensuring a solid and durable construction that allows for multiple retreads.



## F Stone Ejector Design

The central two grooves feature a stone ejector design, preventing damage from stone and other foreign object intrusion.



Inch	Size	PR	LI/SS	TD (mm)	Plant
22.5	385/65R22.5	24PR	164K	16.5	VN

# The EnduraTour Series

The EnduraTour Series tires are built for both on-road and off-road performance, excelling in aggressive, uneven, and muddy terrains, and are ideal for carrying heavy loads at medium to slow speeds with frequent stops, offering exceptional durability and adaptability to diverse road conditions.



**EnduraTour**  
**GAM510**  
**GAM510+**

**EnduraTour**  
**GAM512**  
**GAM512HD**

**EnduraTour**  
**GDM610**

**EnduraTour**  
**GDM612**

**EnduraTour**  
**GDM613**

**EnduraTour**  
**GDX711**

# EnduraTour

## GAM510/GAM510+

All-Position Tire For On & Off Road Application



**GAM510:** A mixed-service all-position tire offering balanced performance in rough-road adaptability and tread life for versatile fleet use.

**GAM510+:** A mixed-service all-position tire with a widened tread that enhances stability while balancing rough-road adaptability and uncompromised mileage on paved roads.

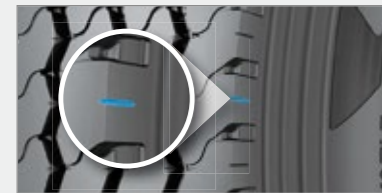
### A Widened Tread

The widened tread and optimized contact patch ensure more even pressure distribution across the crown, enhancing wear resistance and providing excellent stability during long-distance driving.



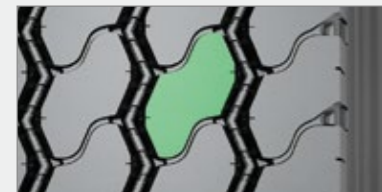
### B Optimized Shoulder Design

The shoulder features a small opening design, which maintains shoulder strength while reducing heat buildup, making it suitable for short-distance, high-speed driving.



### C Safety and Comfort

Enhanced braking performance: The S-shaped tread blocks improved the braking effectiveness of the tread, while reducing stopping distance.



### D Enhanced Sidewall Protection

The reinforced sidewall design reduces damage from scrapes and impacts.



### E Wet Traction Design

Each tread block is reinforced with steel plates on both ends, effectively enhancing performance on wet surfaces.

### F Stone Ejector Design

Each of the three tread grooves is equipped with a stone ejector design, reducing the risk of puncture damage from sharp objects in adverse road conditions.



Inch	Size	PR	LI/SS	TD (mm)	Plant
22.5	11R22.5 GAM510	16PR	148/145K	17.0	CN
	11R22.5 GAM510	18PR	149/146J	17.0	CN
	12R22.5 GAM510	18PR	152/149K	16.0	CN
	13R22.5 GAM510+	18PR	156/150K	17.5	VN
	13R22.5 GAM510	20PR	156/150K	18.0	CN
	295/80R22.5 GAM510+	18PR	154/149K	17.0	VN
	315/80R22.5 GAM510+	18PR	156/150L(154/150M)	16.5	VN
24	315/80R22.5 GAM510+	20PR	156/150L(154/151M)	16.5	VN
	315/80R22.5 GAM510	20PR	156/153K	16.0	CN
	12.00R24 GAM510	20PR	160/156K	15.5	CN
	325/95R24 GAM510	22PR	162/160K	15.5	CN VN

# EnduraTour

## GAM512/GAM512HD

All-Position Tire For On & Off Road Application

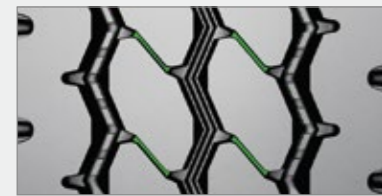


**GAM512:** A mixed-service all-position tire designed to balance rough-road adaptability with dependable mileage on paved surfaces.

**GAM512HD:** A heavy-duty mixed-service all-position tire engineered to balance high load-carrying capacity, rough-road adaptability, and reliable mileage on paved roads.

### A Continuous Central Rib Design

The central tread blocks are interconnected by ribs, providing exceptional straight-line stability and reducing the risk of drift during high-speed driving.



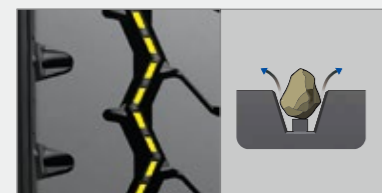
### B High Load Capacity

The high-strength bead design delivers excellent impact resistance and load-bearing performance on unpaved surfaces, ensuring safe driving.



### C Stone Ejector Technology

The grooves on both sides are equipped with raised stone-ejecting rubber strips, providing protection against damage from gravel and foreign objects in harsh conditions.



### D Innovative ZigZag Design

As the tread wears, the land-sea ratio decreases, increasing the contact area and extending the tire's usable life.

### E Semi open shoulder

Ensures grip on unpaved surfaces while dissipating heat generated by excessive flexing of the tire body during short-distance heavy load transportation, thereby extending tire lifespan.



### F Enhanced Versatility

The M-shaped shoulder design ensures continuous ground contact, enabling adaptability to mixed urban and rural road conditions and a variety of weather scenarios, including wet surfaces and light snow.

### G Reinforced Sidewall Protection

Strengthened sidewall structure prevents cuts and abrasions, enhancing the tire's durability and longevity.



### H Robust Casing Structure

Constructed with high-strength steel cords, the casing offers excellent deformation resistance under heavy loads, making it suitable for demanding short-distance heavy-duty transport.



Inch	Size	PR	LI/SS	TD (mm)	Plant
16	7.50R16LT GAM512HD	14PR	123/119L	12.5	CN
	10.00R20 GAM512	18PR	149/146K	15.0	CN
	10.00R20 GAM512HD	18PR	149/146K	15.0	CN
20	11.00R20 GAM512	18PR	152/149K	15.5	CN
	11.00R20 GAM512HD	18PR	152/149K	15.5	CN
	12.00R20 GAM512HD	22PR	158/155J	15.5	CN
	12.00R20 GAM512	18PR	154/151K	15.5	CN

# EnduraTour GDM610

Drive Tire For On & Off Road Application



An on/off-road non-directional drive tire combining dependable traction and rough-road adaptability with improved tread life on paved roads.

## A V-Shaped Tread Design

The large “V” shaped tread pattern firmly grips the ground, delivering powerful driving force, making it especially suitable for use in harsh road conditions.

## B Multi-Directional Design

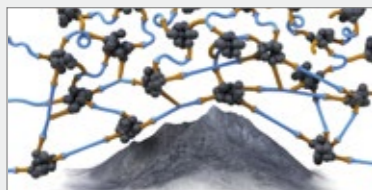
The tread blocks feature multi-directional sipes that quickly evacuate water, effectively improving wet traction and reducing the risk of skidding.

## C Excellent Braking Performance

The large block tread and deep grooves provide a stronger grip during braking, enhancing safety and control.

## D Cut-Resistant Tread Compound

Made with a specialized cut-resistant rubber compound, the tire reduces the risk of punctures from debris on unpaved roads, making it ideal for frequent short-distance transport.



## E Strong Tire Bead

The bead structure is designed for heavy-duty transport, ensuring stable performance under high-load conditions.



## F Robust Tire Construction

The tire features a high-strength steel body that can withstand impacts from rough terrain, ensuring long-lasting durability in harsh environments.

## G Involved for Rough Condition

The sturdy tire structure ensures the tire withstands high torque demands in short-distance transport under harsh conditions, preventing the tire from excessive deformation.

## H Wide Tread Design

The increased tread area enhances load distribution, reduces localized wear, and extends the tire's service life.

Inch	Size	PR	LI/SS	TD (mm)	Plant
16	7.50R16LT	14PR	123/119K	14.5	CN
20	10.00R20	18PR	149/146K	17.0	CN
24	12.00R24	20PR	160/156K	19.0	CN
	325/95R24	22PR	162/160K	19.0	CN VN

# EnduraTour GDM612

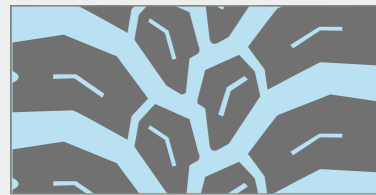
Drive Tire For On & Off Road Application



An on/off-road directional drive tire that balances strong traction and rough-road adaptability with enhanced mileage and efficient water and mud evacuation on paved surfaces.

## A Unidirectional Tread Design

The tread pattern is designed in a single direction, providing optimal traction and drainage performance.

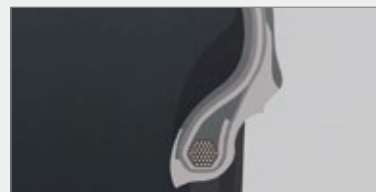


## B Enhanced Traction

The deep grooves improve off-road performance, providing excellent grip on loose surfaces, and performing exceptionally well on gravel, dirt, and other unpaved terrains.

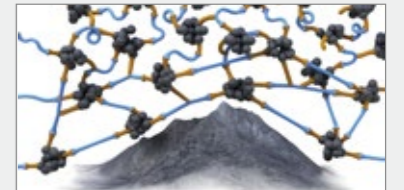
## C Increased Bead Strength

Enhanced bead strength can withstand the high torque experienced by heavy trucks during cornering.



## D Puncture Resistance

The large tread blocks and cut-resistant compound prevent road debris from penetrating the tire.



## E Robust carcass Construction

The application of UHT steel belts creates a sturdy tire structure suitable for short-distance heavy-load transportation needs.



## F Slip Resistance

The unidirectional tread design offers better lateral stability, reducing the risk of slipping.

## G Reinforced Bead Design

The strengthened bead accommodates high loads while ensuring driving stability.



Inch	Size	PR	LI/SS	TD (mm)	Plant
22.5	11R22.5	16PR	148/145K	22.5	CN
	11R22.5	18PR	148/145K	22.5	CN
	13R22.5	18PR	156/150K	20.0	VN
	295/80R22.5	18PR	152/149K	17.0	VN
	315/80R22.5	20PR	156/153K	21.5	CN VN

# EnduraTour GDM613

Drive Tire For On & Off Road Application



A mixed-service drive tire built to withstand workplace conditions, resisting cutting, chipping, punctures, and impact damage while keeping vehicles moving.

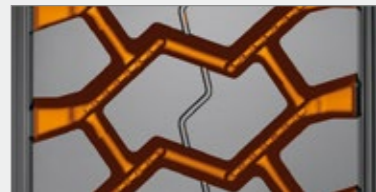
## A Classic Off-Road Pattern Design

The classic pattern design is ideal for short-distance transport, helping reduce transfer costs.



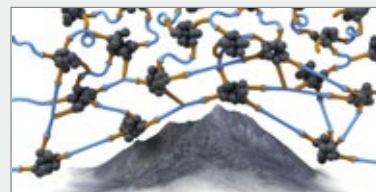
## B Deep Tread Design

The tread features deep and wide grooves that enhance grip on unpaved roads, ensuring excellent performance across various terrains such as rocks, dirt, and gravel.



## C Tear-Resistant Compound

The tread is made with a tear-resistant compound and a reinforced tread design to reduce the risk of early damage from debris in harsh environments.



## D Strong Braking Performance

The tread design increases grip during braking, shortening stopping distances and enhancing safety.



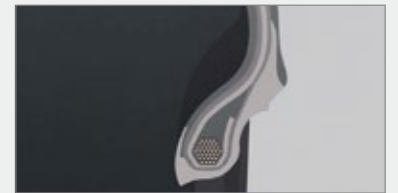
## E Stone Ejection Function

The tread grooves are equipped with stone ejectors that reduce damage to the grooves from debris.



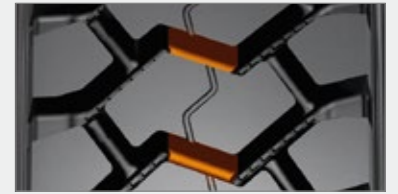
## F Reinforced Bead Design

The bead is specially reinforced to improve tire durability in harsh industrial and mining environments.



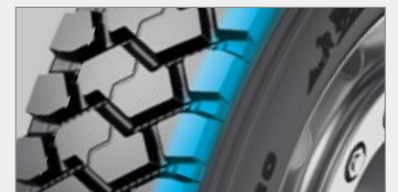
## G Adaptability to Complex Terrains

The center section of the tread features a large S-shaped pattern with reinforcing ribs, making it suitable for mines, quarries, and other complex terrains.



## H Strong Shoulder Design

The robust shoulder tread blocks enhance stability during turns, reducing the risk of side slip.



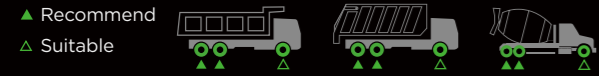
## I Impact Resistance

The tire features a high-strength steel structure, which effectively absorbs shocks from the road surface, minimizing damage to vehicles and cargo while improving driving stability.

Inch	Size	PR	LI/SS	TD (mm)	Plant
16	7.50R16LT	14PR	122/118G	14.5	CN
20	12.00R20	18PR	154/151F	23.5	CN
	12.00R20	22PR	158/155F	23.5	CN

# EnduraTour GDX711

Drive Tire For Off Road Application



A durable tire delivering strong off-road traction and debris resistance.

## A High-Strength Casing Design

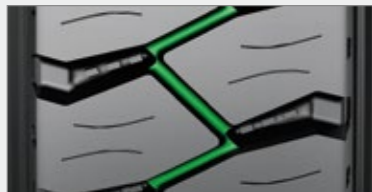
The casing is constructed with high-strength steel wire materials to withstand impacts from uneven terrain, delivering exceptional impact resistance in harsh environments.

## B Specialized Tread Design

The large interlocking tread blocks enhance grip, efficiently transmitting traction and braking forces.

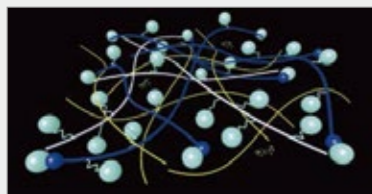
## C Tear-Resistant Design

Reinforcement ribs connect the tread blocks, effectively countering sharp stones and debris on rough terrain that could cause tread tears.



## D Optimized Tread Compound

A cut-resistant rubber compound ensures prolonged service life under harsh mining conditions.



## E High Load-Bearing Capacity

The optimized tire contour combined with high-strength steel wires fortifies the casing structure, making it robust enough for mining operations with limited turning spaces, resisting significant torque and deformation.

## F Enhanced Bead Structure

A specially designed bead structure improves durability and installation stability under complex mining road conditions.

## G Reliable Braking Performance

Large tread blocks provide dependable braking performance in mining environments, especially on downhill slopes, enhancing vehicle safety.

## H Sidewall Protection Layer

Thickened sidewalls create a protective layer to prevent cuts and damage from sharp rocks and other obstacles.

## I Stone-Ejector Design

Rubber ejector blocks at the base of the transverse grooves reduce punctures caused by rocks, gravel, and other challenging terrains.



Inch	Size	PR	LI/SS	TD (mm)	Plant
20	10.00R20	18PR	149/146F	21.5	CN
	11.00R20	16PR	150/147F	23.0	CN
	11.00R20	18PR	152/149F	23.0	CN
	12.00R20	18PR	154/151F	23.5	CN
	12.00R20	22PR	158/155F	23.5	CN

# GREENTOUR Reference Chart

Sizes	RouteTour									VersaTour							EnduraTour									
	GSL910	GSL910N	GSL920	GSL921	GDL810	GDL812	GDL821	GTL310	GTL320	GSR110	GAR111	GDR210	GDR210+	GDR220	GTR311	GTR311N	GTR321	GAM510	GAM510+	GAM512	GAM512HD	GDM610	GDM612	GDM613	GDX711	
7.5OR16LT											•										•	•		•		
9.5R17.5										•																
205/75R17.5										•				•												
215/75R17.5										•				•												
235/75R17.5										•				•												
245/70R17.5										•																
225/70R19.5										•																
245/70R19.5										•																
265/70R19.5										•				•												
285/70R19.5										•				•												
435/50R19.5								•																		
445/45R19.5								•																		
11R22.5				•		•			•	•		•						•					•			
12R22.5										•								•								
13R22.5																		•	•				•			
255/70R22.5										•																
275/70R22.5			•							•																
275/80R22.5										•		•														
295/60R22.5											•															
295/75R22.5				•		•			•	•																
295/80R22.5			•		•					•			•						•					•		
315/60R22.5			•				•																			
315/70R22.5		•	•		•		•						•													
315/80R22.5	•	•	•		•		•			•		•	•					•	•				•			
385/55R22.5			•					•																		
385/65R22.5			•					•							•	•	•									
11R24.5				•		•				•																
10.0OR20																				•	•	•			•	
11.0OR20																				•	•	•				•
12.0OR20																			•	•	•			•		•
12.0OR24																		•				•				
325/95R24																		•				•				



**GREENTOUR**

**GREENTOUR**

Add: Building No. 5, Lane 388 Daduhe Road,  
Shanghai 200062, China

Tel: (+86) (21) 6295 5670

E-mail: greentourtire@greentourtire.com

[www.greentourtire.com](http://www.greentourtire.com)



Greentour Tire 

Version 6.2.1