

GREENTOUR

TRUCK & BUS RADIAL TYRE CATALOGUE



GREENTOUR

18PR FLAT-TRAC STEEL S
MAX LOAD SINGLE 3050 kg (6720 lbs) AT 800 LPS (150 PSI) COLD
MAX LOAD DUAL 3250 kg (7160 lbs) AT 800 LPS (150 PSI) COLD

MADE IN VIETNAM



TYRE SOLUTIONS FOR TRANSPORTATION

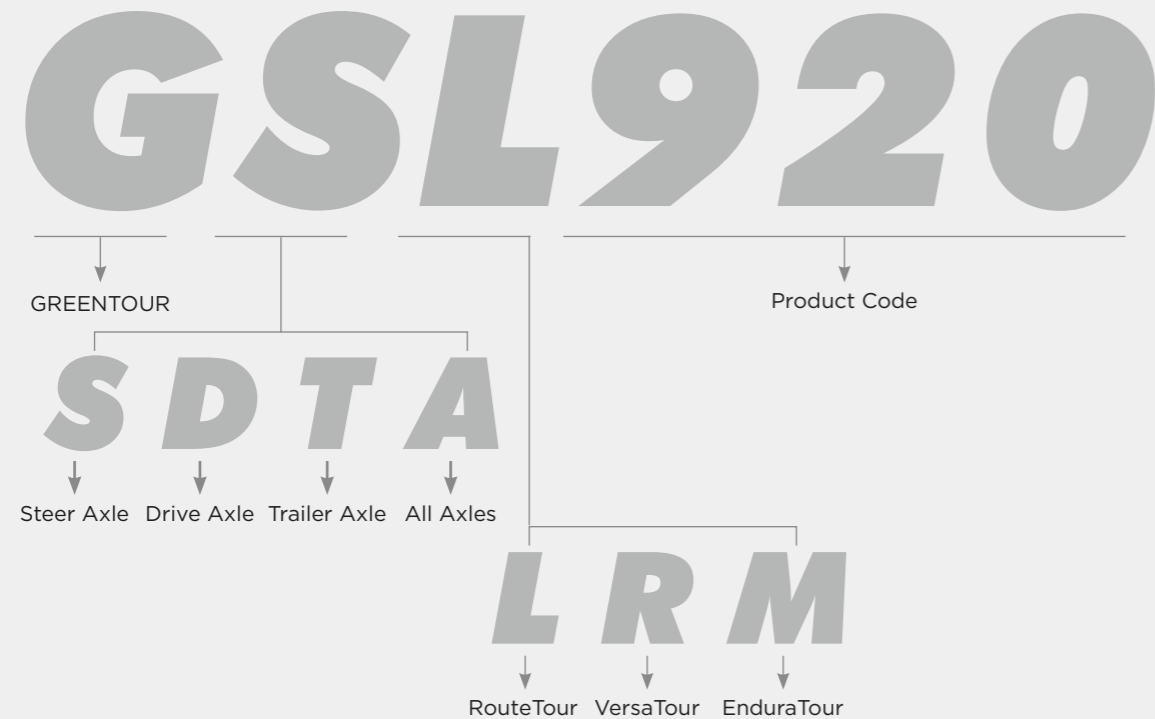
GREENTOUR is a leading tyre solution provider. Our expert team tackles challenges such as increased traffic, heavy loads, and uncertain road conditions. With a focus on minimising operational costs, our products ensure continuous vehicle operation. As trusted partners in the face of evolving international regulations, GREENTOUR tyres guarantee reliability for every journey.



Application

SERIES	APPLICATION
RouteTour	The RouteTour Series tyres are engineered for long-distance travel and are characterized by maintaining a steady speed with minimal need for braking or accelerating. The journey takes place on a well-maintained road surface with fewer curves, allowing for a smoother and more consistent driving experience.
VersaTour	The VersaTour Series tyres are designed for extended trips that involve frequent stops, speed fluctuations, and directional changes. The roads are well-paved but include curves and occasionally rough surfaces, offering a combination of manageable and challenging driving conditions.
EnduraTour	The EnduraTour Series tyres are built for both on-road and off-road performance, excelling in aggressive, uneven, and muddy terrains, and are ideal for carrying heavy loads at medium to slow speeds with frequent stops, offering exceptional durability and adaptability to diverse road conditions.

Tyre Naming System



Tyre Range

RouteTour

P.07 — P.14



RouteTour
GSL920

RouteTour
GDL821

RouteTour
GTL310

VersaTour

P.15 — P.24



VersaTour
GSR110

VersaTour
GDR210
GDR210+

VersaTour
GDR220

VersaTour
GTR321

EnduraTour

P.25 — P.30



EnduraTour
GAM510+

EnduraTour
GDM612

The RouteTour Series

The RouteTour Series tyres are engineered for long-distance travel and are characterized by maintaining a steady speed with minimal need for braking or accelerating. The journey takes place on a well-maintained road surface with fewer curves, allowing for a smoother and more consistent driving experience.



RouteTour
GSL920

RouteTour
GDL821

RouteTour
GTL310

RouteTour **GSL920**

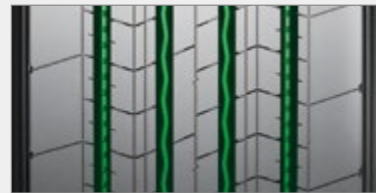
Premium Steer Tyre For Long-Haul Application



A steer-axle tyre that combines strong safety reserves with fuel-efficient, long-mileage performance.

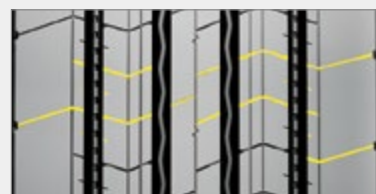
A Four Main Groove Design

The classic four-groove pattern is specifically designed for long-distance driving, providing excellent handling for straight-line stability. Its superior water drainage capabilities reduce the risk of hydroplaning during rainy conditions.



B Continuous Central Rib

Improves straight-line stability and directional control, making it ideal for long-distance highway driving.



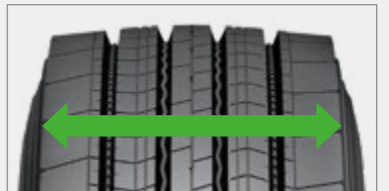
C Superior Tread Design

The crown is reinforced with multiple sipes, enhancing the tyre's resistance to wet conditions and improving safety during driving in rain and snow.



D Wide Tread Design

The wide contact patch increases the tyre's ground contact area, disperses load pressure, improves wear resistance, and is ideal for heavy-duty long-haul transportation.



E Stone Ejection Design

The straight grooves on both sides are equipped with stone ejectors to reduce damage from trapped stones. The two central grooves feature an S-shaped design that automatically expels dirt and stones during driving, providing excellent self-cleaning capabilities.

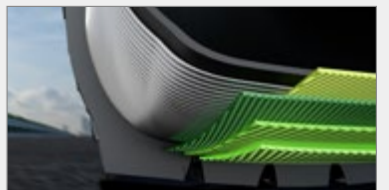
F Enhanced Lateral Stability

Reinforced carcass structure and specially strengthened shoulders improve lateral stability during high-speed cornering.



G High Retreadability

The casing design allows for multiple retreads, extending the overall tyre lifespan and reducing long-term costs.



Size	PR	LI/SS	TD (mm)	M+S	▲	🌀	🌀	🌀	🔊	🔊
275/70R22.5	16	148/145M	14.5	✓	✓	D	B	72dB	B	
295/80R22.5	18	154/149M	15.5	✓	✓	C	B	72dB	B	
315/60R22.5	18	154/148L	13.0	✓	✓	C	B	72dB	B	
315/70R22.5	18	156/150L (152/148M)	15.0	✓	✓	C	B	72dB	B	
315/80R22.5	18	156/150L (154/150M)	16.0	✓	✓	C	B	72dB	B	
315/80R22.5	20	156/150L (154/150M)	16.0	✓	✓			coming soon		
385/55R22.5	20	160K(158L)	13.5	✓	✓	C	B	72dB	B	
385/55R22.5	24	164K(158L)	13.5	✓	✓			coming soon		
385/65R22.5	20	160K(158L)	13.5	✓	✓	B	B	72dB	B	
385/65R22.5	24	164K(158L)	13.5	✓	✓			coming soon		

RouteTour GDL821

Drive Tyre For Long-Haul Application



A drive-axle tyre that lowers fuel consumption while providing durable, high-mileage performance.

A Unique Unidirectional Design

The tread pattern is designed for single-directional flow, providing optimal traction and drainage performance, ensuring good grip on both dry and wet surfaces.

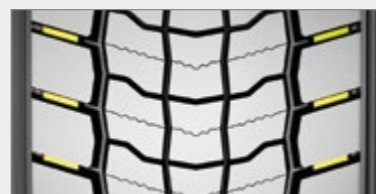
B Unique Tread Block Design

Five large tread blocks are arranged laterally, with shoulder and central blocks staggered. This alternating ground contact reduces tyre vibration during driving, enhancing ride stability.



C Reinforced Shoulder Design

Independent tread patterns on both shoulders are connected by strengthening ribs, ensuring tyre drive force while preventing tread tearing due to excessive deformation during heavy acceleration, thus enhancing tyre lifespan.



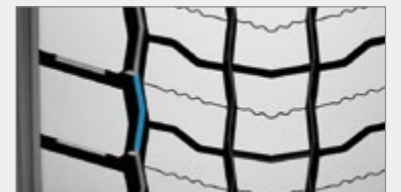
D Wear-Resistant Compound

Unyielding wear-resistant compound that reduces wear during prolonged high-speed driving, extending tyre lifespan and providing excellent mileage performance.



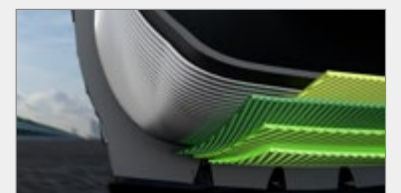
E Self-Cleaning Capability

The "V" shaped tread grooves automatically expel stones, mud, and other debris during driving, keeping the tread surface clean.



F Reinforced Casing Structure

Built with UHT steel cords for a robust structure, the tyre ensures enhanced durability and damage resistance while supporting multiple retreads, effectively reducing replacement costs and enhancing performance during prolonged high-speed driving.



G Wide Contact Area

The wide tread design increases the tyre's ground contact area, distributes load pressure evenly, reduces tyre wear, and enhances mileage.

Size	PR	LI/SS	TD (mm)	M+S	🏔️	🌀	🌀	🌀	🌀
295/60R22.5	18	150/147L	15.5	✓	✓	D	C	74dB	B
315/60R22.5	18	152/148L	16.5	✓	✓	C	C	74dB	B
315/70R22.5	18	156/150L (152/148M)	18.0	✓	✓	C	C	74dB	B
315/80R22.5	18	156/150L (154/150M)	17.5	✓	✓	D	C	74dB	B
315/80R22.5	20	156/150L (154/150M)	17.5	✓	✓	coming soon			

RouteTour GTL310

Premium Trailer Tyre For Long-Haul & Regional Application



A wide-base trailer tyre designed to maximise carrying efficiency with ultra-high mileage performance.

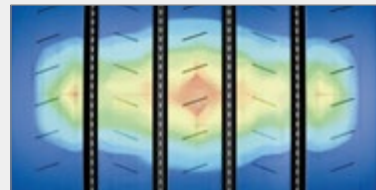
A Enhanced Shoulder Design

The GTL310 features an enhanced shoulder design that reduces uneven wear in high-scrub applications, extending tyre life and ensuring more consistent performance over time.



B Optimised Footprint Distribution

The tyre's design ensures optimal footprint distribution, promoting even wear across the tread and extending tyre life. This design reduces the frequency of replacements, making it a cost-effective option for fleet operators.



C High-Wear Tread Compound

Constructed with a high-wear tread compound, the GTL310 resists abrasion and provides more miles per tyre, offering excellent value over its lifespan.



D Advanced Tread Design

The GTL310 incorporates an advanced tread design that minimises energy loss, improving fuel efficiency and lowering operating costs over long distances.



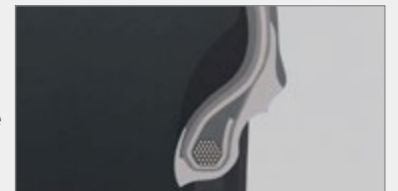
E Optimised Tread Depth

The tyre features an optimised tread depth that balances rolling resistance and traction, enhancing fuel efficiency without compromising performance.



F Sturdy Bead Design

The GTL310's sturdy bead design ensures a secure fit on the rim, enhancing stability during heavy-duty operations. This feature is particularly important for maintaining control and safety in trailer applications.



G Reinforced Carcass Structure

The GTL310's reinforced carcass structure increases load-bearing capacity and reduces deformation under stress, maintaining tyre performance and reliability during demanding long-haul operations.



Size	PR	LI/SS	TD (mm)	M+S	▲	🌀	🌀	🌀	🌀
435/50R19.5	20	160J	12.5	✓	✓	B	B	72dB	B
445/45R19.5	20	160J	13.0	✓	✓	C	B	72dB	B
385/55R22.5	24	164K	14.5	✓	✓	C	B	72dB	B
385/65R22.5	24	164K	15.5	✓	✓	C	B	72dB	B

The VersaTour Series

The VersaTour Series tyres are designed for extended trips that involve frequent stops, speed fluctuations, and directional changes. The roads are well-paved but include curves and occasionally rough surfaces, offering a combination of manageable and challenging driving conditions.



VersaTour
GSR110

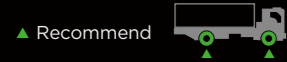
VersaTour
GDR210
GDR210+

VersaTour
GDR220

VersaTour
GTR321

VersaTour GSR110

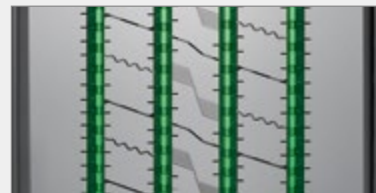
Steer/Trailer Tyre For Regional Application



An all-position steer/trailer tyre that offers a solid balance of regional and super-regional road adaptability with dependable mileage.

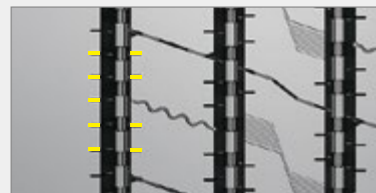
A Optimised Main Groove Design

Reduces lateral tyre sliding during driving, enhancing handling performance in complex road conditions, and features stone ejection design to prevent debris from getting lodged, minimising tread damage.



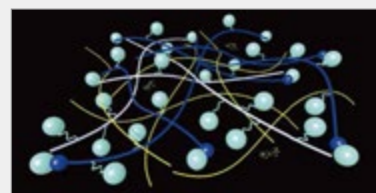
B Multi-Sipes Design

Enhances tread grip, ensuring controllability and traction on wet and snowy surfaces.



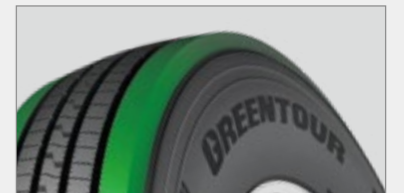
C High Heat Resistance

Utilising a special rubber compound, the tyre offers excellent heat resistance during prolonged driving, reducing the risk of overheating and ensuring safety.



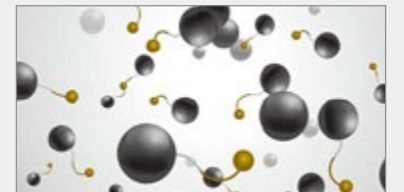
D Enhanced Shoulder Design

Optimised shoulder design reduces irregular wear, improving wear resistance and handling stability.



E Wear-Resistant Compound

Utilising a unique formulation that enhances wear resistance and cut protection, extending tyre lifespan, making it suitable for prolonged use in harsh conditions.



F Robust and Durable

Featuring a reinforced casing structure that enhances impact resistance and puncture protection, adapting to various road conditions and providing a longer lifespan.



G High Comfort

The tread design effectively reduces vibrations and noise during driving, enhancing driver comfort, making it especially suitable for long-haul transportation.

Size	PR	LI/SS	TD (mm)	M+S	▲	🌀	🌀	🌀	🔊
205/75R17.5	14	124/122M	13.0	✓	✓	D	B	71dB	A
215/75R17.5	16	135/133L (128/126M)	12.5	✓	✓	C	B	71dB	A
235/75R17.5	18	143/141L (132/130M)	13.0	✓	✓	D	B	71dB	A
245/70R17.5	18	143/141K	13.0	✓	✓	D	B	71dB	A
225/70R19.5	14	128/126L	12.5	✓	✓	D	B	71dB	A
245/70R19.5	18	144/142J (136/134M)	13.0	✓	✓	D	B	71dB	A
265/70R19.5	18	143/141J (140/138M)	13.5	✓	✓	D	B	71dB	A
285/70R19.5	18	150/148K (146/144M)	13.0	✓	✓	C	B	71dB	A
275/80R22.5	16	149/146L	14.5	✓	✓	D	B	72dB	B

VersaTour

GDR210 / GDR210+

Drive Tyre For Regional Application



A regional drive tyre with a widened tread that balances traction, driving stability, and high mileage to help lower cost per kilometer.

A Stone Ejection Design

The tread blocks are optimised with angled designs and a unidirectional pattern, enabling the expulsion of trapped stones and providing excellent self-cleaning capabilities.

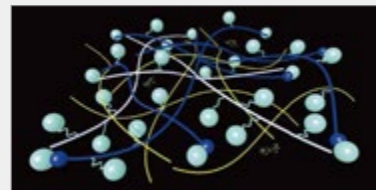


B Reinforced Tread Blocks

The central crown features independent hexagonal tread blocks complemented by lateral slits, enhancing exceptional grip, especially on wet and muddy surfaces.

C Tear-Resistant Tread Design

The specially formulated tread enhances tear resistance, extending the tyre's lifespan under harsh conditions.



D Reinforced Bead Strength

The bead design is reinforced to ensure a tight fit between the tyre and the rim during vehicle power output, enhancing driving safety.



E Reinforced Block Connectors

The tread blocks are interconnected with reinforcing ribs, reducing the flexing of individual blocks under load and minimising feathering wear.

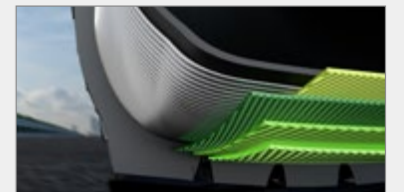


F Effective Heat Dissipation Design

Grooves between the tread blocks aid in rapid heat dissipation, ensuring the crown maintains durability during prolonged driving.

G Retreadability

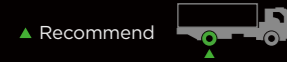
This tyre is designed with retread potential in mind, featuring a sturdy and durable construction suitable for multiple retreads, thereby extending its lifespan.



Size	PR	LI/SS	TD (mm)	M+S	🏔️	🚛	🚗	🔊	🔊
275/80R22.5 GDR210	16	149/146L	20.0	✓	✓	D	C	75dB	B
295/80R22.5 GDR210+	18	152/149L	21.0	✓	✓	D	C	75dB	B
315/70R22.5 GDR210+	18	156/150L (152/148M)	19.5	✓	✓	D	C	75dB	B
315/80R22.5 GDR210+	18	156/150L (154/150M)	20.5	✓	✓	D	C	75dB	B
315/80R22.5 GDR210+	20	156/150L (154/150M)	20.5	✓	✓	coming soon			

VersaTour GDR220

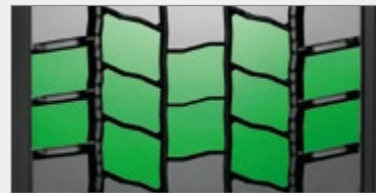
Drive Tyre For Regional Application



A light-truck drive tyre combining strong traction, low failure risk, and reliable mileage to keep vehicles running smoothly.

A Lateral Five-Block Tread Design

The tread features five lateral blocks, increasing contact area while balancing wear resistance and grip performance.

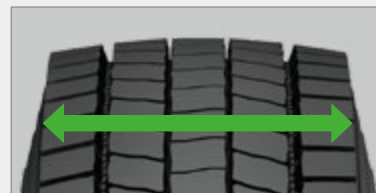


B Central Tread Arrangement

The three central tread blocks are closely connected and staggered, ensuring high-speed performance while reducing driving vibrations.

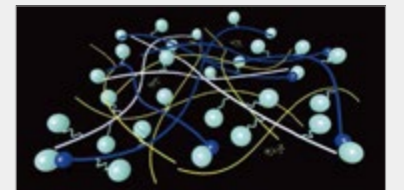
C Widened Crown Design

The widened crown design provides a larger contact area, enhancing driving stability and grip.



D Anti-Aging Compound

The formula incorporates enhanced rubber molecular chains to effectively slow down tyre aging, extending its lifespan.



E Classic Square Design

Ensures even tread pressure distribution across the footprint, featuring shoulder blocks linked by reinforcing ribs to minimise irregular wear.



F Low Void Ratio for Fuel-Efficient Drive

Compared to similar products, the crown features a high-saturation design in the center, reducing fuel consumption at the drive axle during high-speed driving.



G Stone Ejection Performance

The grooves on both sides of the crown feature stone-ejecting channels, effectively removing stones and dirt, significantly reducing damage caused by stone entrapment.

Size	PR	LI/SS	TD (mm)	M+S	▲	🌀	🌀	🌀	🌀
205/75R17.5	14	124/122L	14.5	✓	✓	D	C	75dB	B
215/75R17.5	16	135/133L (128/126M)	14.5	✓	✓	D	C	75dB	B
235/75R17.5	18	143/141L (132/130M)	14.5	✓	✓	D	C	75dB	B
265/70R19.5	18	143/141J (140/138M)	15.0	✓	✓	D	C	75dB	B
285/70R19.5	18	150/148K (146/144M)	15.5	✓	✓	D	C	75dB	B

VersaTour GTR321

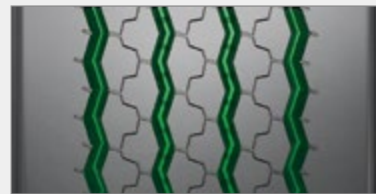
Trailer Tyre For Long-Haul & Regional Application



A flagship wide-base trailer tyre delivering ultra-high mileage and stable performance for demanding operations.

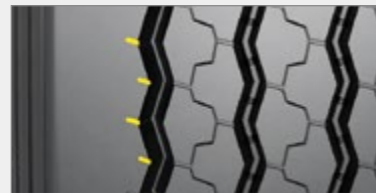
A Versatile Adaptability

The design features four zigzag grooves that ensure high-speed performance while accommodating regional transport environments, effectively adapting to varying road conditions during transit.



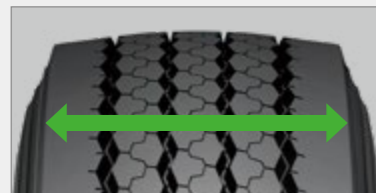
B Wet Traction Performance

The sipes on the shoulders incorporate steel plates, effectively enhancing resistance to hydroplaning.



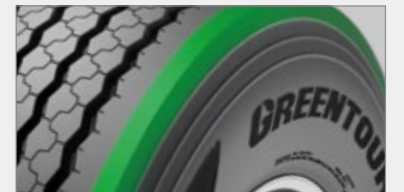
C Wide Tread Design

The wide tread surface maximises the contact area between the crown and the ground, improving durability and stability.



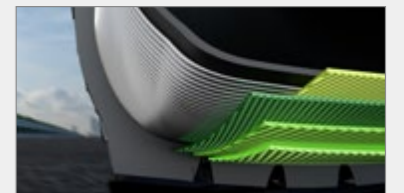
D Low Rolling Resistance

The smooth surface on both sides, combined with a closed shoulder design, reduces rolling resistance during travel, thereby enhancing fuel efficiency.



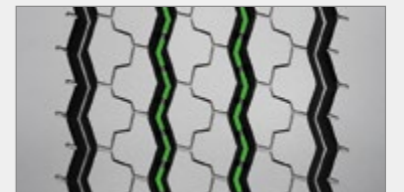
E Robust Carcass Structure

The carcass UHT steel wires, ensuring a solid and durable construction that allows for multiple retreads.



F Stone Ejector Design

The central two grooves feature a stone ejector design, preventing damage from stone and other foreign object intrusion.



Size	PR	LI/SS	TD (mm)	M+S	▲	🌀	🌀	🌀	🔊
385/65R22.5	24	164K	16.5	✓	✓	C	C	72dB	B

The EnduraTour Series

The EnduraTour Series tyres are built for both on-road and off-road performance, excelling in aggressive, uneven, and muddy terrains, and are ideal for carrying heavy loads at medium to slow speeds with frequent stops, offering exceptional durability and adaptability to diverse road conditions.



EnduraTour
GAM510+

EnduraTour
GDM612

EnduraTour GAM510+

All-Position Tyre For On & Off Road Application



A mixed-service all-position tyre with a widened tread that enhances stability while balancing rough-road adaptability and uncompromised mileage on paved roads.

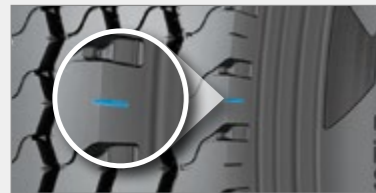
A Widened Tread

The widened tread and optimised contact patch ensure more even pressure distribution across the crown, enhancing wear resistance and providing excellent stability during long-distance driving.



B Optimised Shoulder Design

The shoulder features a small opening design, which maintains shoulder strength while reducing heat buildup, making it suitable for short-distance, high-speed driving.



C Safety and Comfort

Enhanced braking performance: The S-shaped tread blocks improve the braking effectiveness of the tread, while reducing stopping distance.



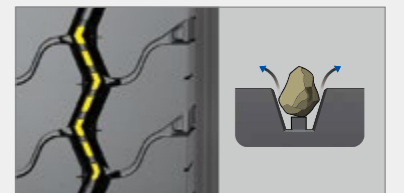
D Enhanced Sidewall Protection

The reinforced sidewall design reduces damage from scrapes and impacts.



E Wet Traction Design

Each tread block is reinforced with steel plates on both ends, effectively enhancing performance on wet surfaces.



F Stone Ejector Design

All tread grooves feature a stone ejector design, reducing the risks of puncture damage from sharp objects in adverse road conditions.



G Wide Adaptability

The tread features a hybrid three-line design, making it suitable for a variety of road surfaces, from urban to rural environments.

Size	PR	LI/SS	TD (mm)	M+S	▲	🌀	🌀	🌀	🌀
13R22.5	18	156/150K	17.5	✓	✓	C	C	73dB	B
295/80R22.5	18	154/149K	17.0	✓	✓	D	C	73dB	B
315/80R22.5	18	156/150L (154/150M)	16.5	✓	✓	C	C	73dB	B
315/80R22.5	20	156/150L (154/151M)	16.5	✓	✓			coming soon	

EnduraTour GDM612

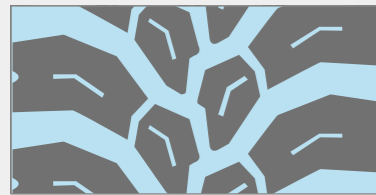
Drive Tyre For On & Off Road Application



An on/off-road directional drive tyre that balances strong traction and rough-road adaptability with enhanced mileage and efficient water and mud evacuation on paved surfaces.

A Unidirectional Tread Design

The tread pattern is designed in a single direction, providing optimal traction and drainage performance.

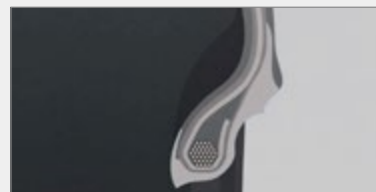


B Enhanced Traction

The deep grooves improve off-road performance, providing excellent grip on loose surfaces, and performing exceptionally well on gravel, dirt, and other unpaved terrains.

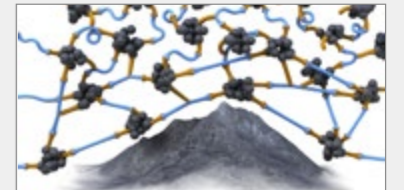
C Increased Bead Strength

Enhanced bead strength can withstand the high torque experienced by heavy trucks during cornering.



D Puncture Resistance

The large tread blocks and cut-resistant compound prevent road debris from penetrating the tyre.



E Robust Carcass Construction

The application of UHT steel belts creates a sturdy tyre structure suitable for short-distance heavy-load transportation needs.



F Slip Resistance

The unidirectional tread design offers better lateral stability, reducing the risk of slipping.





G Reinforced Bead Design

The strengthened bead accommodates high loads while ensuring driving stability.



Size	PR	LI/SS	TD (mm)	M+S	▲	🌀	🌀	🌀	🌀
13R22.5	18	156/150K	20.0	✓	✓	D	B	75dB	B
295/80R22.5	18	152/149K	17.0	✓	✓	D	B	75dB	B
315/80R22.5	20	156/153K	21.5	✓	✓	D	B	75dB	B

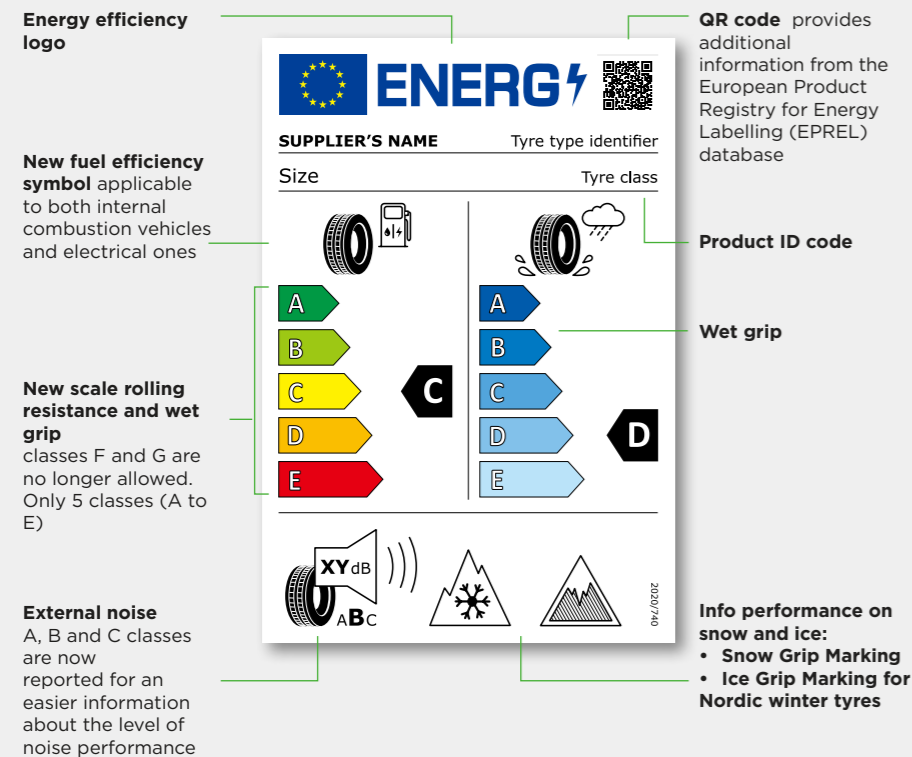
GREENTOUR Reference Chart

Series	Position	Size	Pattern	PR	Load Index	Standard Rim	Overall Diameter (mm)	Section Width (mm)	Tread Depth (mm)	M+S					Load		Pressure				
															S(kg)	D(kg)	S(kpa)	D(kpa)			
RouteTour	Steer / Trailer	275/70R22.5	GSL920	16	148/145M	8.25	958	276	14.5	√	√	D	B	72dB	B	3150	2900	900	900		
		295/80R22.5		18	154/149M	9.00	1044	298	15.5	√	√	C	B	72dB	B	3750	3250	850	850		
		315/60R22.5		18	154/148L	9.75	950	313	313	13.0	√	√	C	B	72dB	B	3750	3150	900	900	
		315/70R22.5		18	156/150L(152/148M)	9.00	1014	312	312	15.0	√	√	C	B	72dB	B	4000	3350	900	900	
		315/80R22.5		18	156/150L(154/150M)	9.00	1076	312	312	16.0	√	√	C	B	72dB	B	4000	3350	850	850	
		315/80R22.5		20	156/150L(154/150M)	9.00	1076	312	312	16.0	√	√			coming soon		4000	3350	850	850	
		385/55R22.5		20	160K(158L)	12.25	996	386	386	13.5	√	√	C	B	72dB	B	4500		900		
		385/55R22.5		24	164K(158L)	12.25	996	386	386	13.5	√	√			coming soon		5000		900		
		385/65R22.5		20	160K(158L)	11.75	1072	389	389	13.5	√	√	B	B	72dB	B	4500		900		
	385/65R22.5	24	164K(158L)	11.75	1072	389	389	13.5	√	√			coming soon		5000		900				
	Drive	GDL821	295/60R22.5	18	150/147L	9.00	926	292	292	15.5	√	√	D	C	74dB	B	3350	3075	900	900	
			315/60R22.5	18	152/148L	9.75	950	313	313	16.5	√	√	C	C	74dB	B	3550	3150	900	900	
			315/70R22.5	18	156/150L(152/148M)	9.00	1014	312	312	18.0	√	√	C	C	74dB	B	4000	3350	900	900	
			315/80R22.5	18	156/150L(154/150M)	9.00	1082	312	312	17.5	√	√	D	C	74dB	B	4000	3350	850	850	
			315/80R22.5	20	156/150L(154/150M)	9.00	1082	312	312	17.5	√	√			coming soon		4000	3350	850	850	
		Trailer	GTL310	435/50R19.5	20	160J	14.00	931	438	438	12.5	√	√	B	B	72dB	B	4500		900	
				445/45R19.5	20	160J	15.00	895	446	446	13.0	√	√	C	B	72dB	B	4500		900	
				385/55R22.5	24	164K	12.25	996	386	386	14.5	√	√	C	B	72dB	B	5000		930	
385/65R22.5				24	164K	11.75	1072	389	389	15.5	√	√	C	B	72dB	B	5000		900		
VersaTour	Steer / Trailer	205/75R17.5	GSR110	14	124/122M	6.00	753	204	13.0	√	√	D	B	71dB	A	1600	1500	750	750		
		215/75R17.5		16	135/133L(128/126M)	6.00	767	211	211	12.5	√	√	C	B	71dB	A	2180	2060	860	860	
		235/75R17.5		18	143/141L(132/130M)	6.75	797	233	233	13.0	√	√	D	B	71dB	A	2725	2575	875	875	
		245/70R17.5		18	143/141K	7.50	789	248	248	13.0	√	√	D	B	71dB	A	2725	2575	900	900	
		225/70R19.5		14	128/126L	6.75	811	226	226	12.5	√	√	D	B	71dB	A	1800	1700	760	760	
		245/70R19.5		18	144/142J(136/134M)	7.50	839	248	248	13.0	√	√	D	B	71dB	A	2800	2650	900	900	
		265/70R19.5		18	143/141J(140/138M)	7.50	867	262	262	13.5	√	√	D	B	71dB	A	2725	2575	850	850	
		285/70R19.5		18	150/148K(146/144M)	8.25	895	283	283	13.0	√	√	C	B	71dB	A	3350	3150	900	900	
		275/80R22.5		16	149/146L	8.25	1012	276	276	14.5	√	√	D	B	72dB	B	3250	3000	850	850	
	Drive	GDR210	275/80R22.5	16	149/146L	8.25	1012	276	276	20.0	√	√	D	C	75dB	B	3250	3000	850	850	
			295/80R22.5	18	152/149L	9.00	1059	298	298	21.0	√	√	D	C	75dB	B	3550	3250	900	900	
			315/70R22.5	18	156/150L(152/148M)	9.00	1014	312	312	19.5	√	√	D	C	75dB	B	4000	3350	900	900	
		GDR210+	315/80R22.5	18	156/150L(154/150M)	9.00	1082	312	312	20.5	√	√	D	C	75dB	B	4000	3350	850	850	
			315/80R22.5	20	156/150L(154/150M)	9.00	1082	312	312	20.5	√	√			coming soon		4000	3350	850	850	
			205/75R17.5	14	124/122L	6.00	753	204	204	14.5	√	√	D	C	75dB	B	1600	1500	750	750	
			215/75R17.5	16	135/133L(128/126M)	6.00	767	211	211	14.5	√	√	D	C	75dB	B	2180	2060	860	860	
			235/75R17.5	18	143/141L(132/130M)	6.75	797	233	233	14.5	√	√	D	C	75dB	B	2725	2575	875	875	
			265/70R19.5	18	143/141J(140/138M)	7.50	867	262	262	15.0	√	√	D	C	75dB	B	2725	2575	850	850	
Trailer	GTR321	285/70R19.5	18	150/148K(146/144M)	8.25	895	283	283	15.5	√	√	D	C	75dB	B	3350	3150	900	900		
		385/65R22.5	24	164K	11.75	1072	389	389	16.5	√	√	C	C	72dB	B	5000		900			
		385/65R22.5	24	164K	11.75	1072	389	389	16.5	√	√	C	C	72dB	B	5000		900			
EnduraTour	Drive	13R22.5	GDM612	18	156/150K	9.75	1124	320	20.0	√	√	D	B	75dB	B	4000	3350	875	875		
		295/80R22.5		18	152/149K	9.00	1044	298	298	17.0	√	√	D	B	75dB	B	3550	3250	900	900	
		315/80R22.5		20	156/153K	9.00	1076	312	312	21.5	√	√	D	B	75dB	B	4000	3650	850	850	
	All-Position	GAM510+	13R22.5	18	156/150K	9.75	1124	320	17.5	√	√	C	C	73dB	B	4000	3350	875	875		
			295/80R22.5	18	154/149K	9.00	1044	298	298	17.0	√	√	D	C	73dB	B	3750	3250	850	850	
			315/80R22.5	18	156/150L(154/150M)	9.00	1076	312	312	16.5	√	√	C	C	73dB	B	4000	3350	850	850	
315/80R22.5	20	156/150L(154/151M)	9.00	1076	312	312	16.5	√	√			coming soon		4000	3350	850	850				

EU Tyre Label 2021

From May 2021, Regulation (EU) 2020/740 applies, changing the way tyres are labelled.

Greentour welcomes the new EU tyre labelling rules, extending the scheme to cover heavy-duty vehicles. It provides consumers, fleet operators and tyre retailers with objective, reliable and comparable information on three important tyre performance characteristics: the tyre's rolling resistance, wet grip and external rolling noise. A pictogram indicating if the tyre is suitable for use in severe snow conditions (winter and all-season tyres) is present in tyres fulfilling such performance levels. The changes are summarised in this handy guide.



QR code provides additional information from the European Product Registry for Energy Labelling (EPREL) database

The new label includes the same three classifications as before. However, the classes in wet grip and fuel efficiency are renewed to be similar to those of other household appliances. The empty classes are removed, and the scale is from A to E. In addition, there is a new way of marking noise class with letters from A to C, but the decibel level remains as earlier.

On top of existing criteria, the new label introduces Snow Grip Marking as well as Ice Grip Marking. A tyre that is approved for severe snow conditions has the Snow Grip Marking, and a tyre that passes the international ice grip test method shows the Ice Grip Marking on its label.

The new label includes a QR code that can be scanned to see more information about the tyre in the European Product Registry for Energy Labelling (EPREL). The tyre label is also available for download and printout in EPREL.

Via the QR code displayed on the new EU tyre label, consumers will be able to access the corresponding tyre information and download the relevant information.

Info performance on snow and ice:

- Snow Grip Marking
- Ice Grip Marking for Nordic winter tyres

PUBLIC EU DATABASE

Product information sheets and tyre labels must all be made available in the public part of the EU product database.

PRODUCT INFORMATION SHEETS

All tyre types must be accompanied by a product information sheet. As well as the information included on the label, the sheet must show:

- Date of start of production
- Date of end of production when known

LABELLING FOR C3 TYRES

Under the new legislation, C3 tyres must be labelled individually or as a batch as is already mandatory for C1 and C2 tyres.

For more information, please access the official EU legislation here: <https://eur-lex.europa.eu/eli/reg/2020/740/oj>
Additional information is available in the FAQ of the European Commission.

Limited Warranty

TRUCK TYRES

This Limited Warranty/Adjustment Policy provides tyre replacement under specified conditions. This policy applies to GREENTOUR radial truck tyres used in normal service displaying warrantable conditions. Tyres that become unserviceable or wear out because of neglect or mistreatment are excluded from the GREENTOUR Tyres Warranty coverage.

WARRANTY ELIGIBILITY

- This warranty applies to any replacement truck tyre operated in normal service use bearing the GREENTOUR brand name and complete Department of Transportation serial identification number.
- All eligible tyres are covered against defects in workmanship and materials under this warranty. Tyres are covered by this warranty for the life of the original useable tread depth (The original useable tread is determined by measuring the depth on the tread of a new tyre to the top of the tread wear indicator bars molded at 1.6mm) within 72 months from the date of manufacture.
- This warranty applies only to the original purchaser, and is not transferrable to any other party. The warranty time period does not represent the expected service life for tyres covered by this warranty.

WHAT IS WARRANTED

Tyres that become unserviceable within 72 months of the date of manufacture, for reasons other than those stated below, will be replaced under this warranty.

WHAT IS NOT WARRANTED

Tyres that have become unserviceable for the following reason:

- Improper repairs or repairs that have failed. Will void this Limited Warranty.
- Improper maintenance which can include: improper inflation or other maintenance abuses.
- Improper application or operation such as speeding, improper tyre size and/or specification.
- Improper mounting/dismounting procedures, tyres/wheel assembly imbalance.
- Mechanical irregularities in the vehicle or wheel, such as bent wheel assemblies, misalignment, worn or faulty components.
- Accident, corrosion, vandalism, fire or damages caused by contamination from petroleum or other chemical products.

- Irregular tread wear, rapid tread wear or worn-out tread (remaining tread depth less than 1.6mm) is not covered under the GREENTOUR Tyres Limited Warranty.
- Road hazard injuries or damages caused by obstacles or debris, such as cuts, punctures (whether repairable or not), snags, bruises, tears, abrasions or impact breaks (whether repairable or not), etc.

ADDITIONAL EXCLUSIONS

- Materials added such as fillers, sealants, balancing substances and external tyre treatments. If the added material is the cause of a failure the warranty will be deemed as void.
- Tyres submitted for ride disturbance complaints after 1.6mm tread wear.
- Tyres purchased as used.
- Tyres branded by GREENTOUR Tyres which denote special classification at the time of purchase, such as "NA" (non-adjustable), or tyres altered by notching or buffing.
- Tyres used on vehicles in racing or special applications.
- Tyres rendered unserviceable due to snow chains or studs.
- Flat spotting due to improper storage or caused by brake lock.

ADJUSTMENT POLICY

When the original useable tread is worn 1.6mm or less, and a warrantable condition is found, the tyre will be reimbursed at 100% of the current GREENTOUR purchasing price. When a tyre has worn more than 1.6mm and a warrantable condition is found, GREENTOUR will reimburse the tyre on a prorated basis.

GREENTOUR will multiply the % of leftover useable tread by the current GREENTOUR purchasing price at the time the claim is presented to GREENTOUR.

Payment = (Useable remaining tread depth / Usable original tread depth) * current Purchasing price.

GREENTOUR

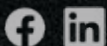
GREENTOUR


Add: Building No. 5, Lane 388 Daduhe Road, Shanghai 200062, China

Tel: (+86) (21) 6295 5670

E-mail: greentourtire@greentourtire.com

www.greentourtire.com



Greentour Tire 



Version 6.1.3 EU